



## Hampstead Heath Consultative Committee

- Date:** MONDAY, 1 NOVEMBER 2021
- Time:** 5.30 pm
- Venue:** HYBRID – VIRTUAL AND COMMITTEE ROOMS 3 & 4, 2ND FLOOR, WEST WING, GUILDHALL
- Members:** Anne Fairweather (Chair)  
William Upton QC (Deputy Chairman)  
Ray Booth (Barnet Mencap)  
Nick Bradfield (Dartmouth Park Conservation Area Advisory Committee)  
John Etheridge (South End Green Association)  
Mathew Frith (London Wildlife Trust)  
Cindy Galvin (Heath Hands)  
Colin Gregory (Hampstead Garden Suburb Residents' Association)  
Michael Hammerson (Highgate Society)  
Dr Gaye Henson (Marylebone Birdwatching Society)  
Simon Hunt (Open Spaces Society)  
Sharlene McGee (Leonard Cheshire Disability)  
Helen Payne (Friends of Kenwood)  
Harunur Rashid (Black and Minority Ethnic Communities representative)  
Susan Rose (Highgate Conservation Area Advisory Committee)  
Steve Ripley (Ramblers' Association)  
Ellin Stein (Mansfield Conservation Area Advisory Committee & Neighbourhood Association Committee)  
Richard Sumray (London Council for Recreation and Sport)  
Simon Taylor (Hampstead Rugby Club)  
Prof. Jeff Waage (Heath and Hampstead Society)  
David Walton (Representative of Clubs using facilities on the Heath)  
John Weston (Hampstead Conservation Area Advisory Committee)  
Simon Williams (Vale of Health Society)
- Enquiries:** Leanne Murphy; [leanne.murphy@cityoflondon.gov.uk](mailto:leanne.murphy@cityoflondon.gov.uk)

### Accessing the virtual public meeting

Members of the public can observe this virtual public meeting at the below link:

<https://youtu.be/mq6W1hPyn4s>

A recording of the public meeting will be available via the above link following the end of the public meeting for up to one municipal year. Please note: Online meeting recordings do not constitute the formal minutes of the meeting; minutes are written and are available on the City of London Corporation's website. Recordings may be edited, at the discretion of the proper officer, to remove any inappropriate material.

**John Barradell**  
Town Clerk and Chief Executive

# **AGENDA**

## **Public Agenda**

1. **APOLOGIES**
2. **MEMBERS' DECLARATIONS UNDER THE CODE OF CONDUCT IN RESPECT OF ITEMS ON THE AGENDA**
3. **MINUTES**  
To agree the minutes of the meeting held on 6 September 2021.  
**For Decision**  
(Pages 5 - 12)
4. **HAMPSTEAD HEATH, HIGHGATE WOOD & QUEEN'S PARK COMMITTEE MINUTES**  
To receive the draft minutes of the Hampstead Heath, Highgate Wood & Queen's Park Committee meeting held on 29 September 2021.  
**For Information**  
(Pages 13 - 20)
5. **HAMPSTEAD HEATH SPORTS & WELLBEING FORUM ACTION POINTS**  
To receive the draft action points of the Hampstead Heath Sports & Wellbeing Forum meeting held on 12 October 2021.  
**For Information**  
(Pages 21 - 24)
6. **SUPERINTENDENT'S UPDATE**  
Report of the Executive Director of Environment.  
**For Discussion**  
(Pages 25 - 30)
  - a) Appendix 1 - Divisional Plan 2021-24 (Pages 31 - 46)
  - b) Appendix 2 - Hampstead Heath High Level Asset Management Plan 2021-2023 (Pages 47 - 50)
  - c) Appendix 3 - Hampstead Heath Annual Work Programme 6 month RAG Status update (Pages 51 - 58)
7. **REVIEW OF THE 2021 EVENTS PROGRAMME & PROVISIONAL EVENTS PLANNED FOR THE 2022 PROGRAMME**  
Report of the Executive Director of Environment.  
**For Discussion**  
(Pages 59 - 68)
8. **TWO YEAR REVIEW OF THE OPEN SPACES DEPARTMENT'S LEARNING PROGRAMME 2019-21**  
Report of the Director of Open Spaces.  
**For Information**  
(Pages 69 - 106)

9. **HEATH HANDS UPDATE**

Heath Hands to be heard.

**For Information**  
(Pages 107 - 108)

10. **QUESTIONS**

11. **ANY OTHER BUSINESS THAT THE CHAIRMAN CONSIDERS URGENT**

12. **DATE OF NEXT MEETING**

The dates of the 2022 meetings are:

24 January 2022

23 May 2022

5 September 2022

7 November 2022

This page is intentionally left blank

## **HAMPSTEAD HEATH CONSULTATIVE COMMITTEE** **Monday, 6 September 2021**

Minutes of the virtual meeting of the Hampstead Heath Consultative Committee held  
on Monday, 6 September 2021 at 5.30 pm

### **Present**

#### **Members:**

Anne Fairweather (Chair)  
Nick Bradfield (Dartmouth Park Conservation Area Advisory Committee)  
John Etheridge (South End Green Association)  
Colin Gregory (Hampstead Garden Suburb Residents' Association)  
Michael Hammerson (Highgate Society)  
Dr Gaye Henson (Marylebone Birdwatching Society)  
Helen Payne (Friends of Kenwood)  
Thomas Radice (Heath and Hampstead Society)  
Steve Ripley (Ramblers' Association)  
Ellin Stein (Mansfield Conservation Area Advisory Committee & Neighbourhood Association Committee)  
Richard Sumray (London Council for Recreation and Sport)  
Simon Taylor (Hampstead Rugby Club)  
John Weston (Hampstead Conservation Area Advisory Committee)  
Simon Williams (Vale of Health Society)

#### **In attendance:**

Merlin Fox (representing Heath Hands)

#### **Officers:**

Juliemma McLoughlin	- Executive Director of Environment
Colin Buttery	- Director of Open Spaces
Richard Gentry	- Acting Superintendent, Hampstead Heath
Declan Gallagher	- Operational Service Manager, Hampstead Heath
Yvette Hughes	- Business Manager, Hampstead Heath
Paul Maskell	- Leisure and Events Manager, Hampstead Heath
Jonathan Meares	- Highgate Wood, Conservation & Trees Manager
Katherine Radusin	- PA to Superintendent of Hampstead Heath
Leanne Murphy	- Committee and Member Services Officer

### **1. APOLOGIES**

Apologies were received from Susan Rose, Mathew Frith and Ray Booth.

The Chair advised Members that this would be Thomas Radice's last meeting as representative of the Heath and Hampstead Society and thanked him for his hard work during many years of service on this Committee. These thanks were echoed by Members.

2. **DECLARATIONS BY MEMBERS OF ANY PERSONAL AND PREJUDICIAL INTERESTS IN RESPECT OF ITEMS ON THIS AGENDA**

There were no declarations.

3. **MINUTES**

The public minutes of the meeting held on 19 April 2021 were approved as a correct record subject to amendments concerning the draft Terms of Reference for the Hampstead Heath Sports and Wellbeing Forum and reference to Kenwood's Forest School "Into the Woods".

**Matters arising**

- On behalf of Friends of Kenwood, a Member formally thanked the City Corporation for relocating the biodiversity interpretation board.
- With regards to plans for the 150th anniversary celebrations, Officers confirmed plans were being discussed for an evening event of readings from local writers and a venue was being sourced.

4. **HAMPSTEAD HEATH, HIGHGATE WOOD & QUEEN'S PARK COMMITTEE MINUTES**

The draft public minutes of the Hampstead Heath, Highgate Wood and Queen's Park Committee meeting held on 26 May 2021 were received.

5. **HAMPSTEAD HEATH SPORTS & WELLBEING FORUM ACTION POINTS**

The draft action points of the Hampstead Heath Sports & Wellbeing Forum held on 5 July 2021 were received.

Some Members of the Committee sitting on the newly formed Sports and Wellbeing Forum voiced concern around the number of Members on the Forum. Members were advised that the effectiveness of the new Forum would be reviewed next year after more meetings. It was also noted that the numbers were smaller on the Forum than this Committee and Officers were only present to report.

6. **SUPERINTENDENT'S UPDATE**

Members considered an update report of the Superintendent regarding Hampstead Heath and the following comments were made:

**Drone guidance**

- A Member (Heath & Hampstead Society) did not feel that the draft Drone Guidance was strong enough in its position regarding drones as it only encouraged against the use of drones on Hampstead Heath which was not a legally enforceable presumption. Officers confirmed that changes in the Air Navigation Order 2016 (ANO) made things more complex and legal advice was being sought to clarify the guidance. Officers would introduce an application process for pilots to fly drones on the Heath; although not mandatory, it would enable Officers to identify if the Drone falls within the permissions of the ANO 2016.

- A Member (London Council for Recreation and Sport) recommended differentiating between policy and guidance and queried if the Heath could have separate guidance from national guidance due to its byelaws. Officers confirmed they would be undertaking a review of the relevant byelaws for Hampstead Heath and would use Fixed Penalty Notices (FPN) against those repeatedly breaking laws.

### **Professional dog walking scheme**

- Officers have liaised with the Professional Dog Walking Association and initially received 50 responses to an expression of interest. Criticism was received from the lack of understanding of where professional dog walkers walked their dogs. An exercise has been carried out to develop a heat map of the different areas used across the Heath by professional dog walkers. Members were informed that the Heath would be zoned into 6 segments and a limited number of licenses would be issued for each zone. There would no longer be morning or afternoon slots and there would be a limit of four dogs per professional dog walker.
- The Chair noted that a number of representations had been received from small business/individuals and there was a need to balance the maintenance of the environment with business reliance needs.
- A Member (Hampstead Conservation Area Advisory Committee) enquired if East Heath was a single zone as this appeared to be the most popular area. Officers confirmed East Heath up to the Upper Fairground site would form one zone.
- Members were advised that there would be approximately 10 - 15 licences for each zone.
- Members voiced concern this would this allow for constant swaps of dog walking by one professional within their zone. Officers clarified a licence would be issued to an individual dog walker who could operate within a designated zone. However, companies would have to licence each individual dog walker.
- The Chair queried when the scheme would come into effect and Officers advised that 21 days' notice must be given. It was hoped this would follow the upcoming HHMC meeting (pending approval) and come into effect in October/November 2021.
- A Member (Hampstead Conservation Area Advisory Committee) questioned how Licenced Professional Dog Walkers could be identified. Officers confirmed either a pass, lanyard or armband would be issued to licensed dog walkers.

### **Playgrounds**

- Members were advised that Officers were working with the local community to develop the Concept Design for the Heath Extension Playground. Public engagement was ongoing with a deadline for feedback until 26 September 2021.
- Members were supportive of the Concept Design.

## **Planning**

- **Jack Straws Castle (2020/1828/P).** Officers await details regarding the alterations and planning permissions as this site borders Heath lands.
- **Murphy's Yard.** Members were advised there were major issues, particularly concerning the height of the proposal. It was suggested that local user groups comment on the current proposed redevelopment of the area.
- **55 Fitzroy Park (2018/3672/P).** This application remained undetermined. The drainage issues remain unresolved and no further update to the application has been made since April 2021.
- **Branch Hill Pond.** Officers are working with a consultant to submit a planning application for a small pond.

## **Tree planting on Parliament Hill Broad Walk**

- A Member (Hampstead Rugby Club) voiced concern regarding the planting of new trees as there were lots of users of the slope and there was potential for saplings damage.
- Members were informed that 3 groups of new trees would be planted on the eastern corner of the athletics track down to Hive and they would be planted approximately 10-15m apart. The trees were not saplings and would be protected.

## **Capital Works**

- Members were advised that the Parliament Hill Athletics Track surface would require a full reconstruction in order to attain TrackMark certification. A Capital Bid had been submitted for funding consideration. It was noted that external organisations had suspended their grant funding, and this was impacting on Officers ability to secure external funding towards the project. Officers would continue to work with neighbouring Local Authorities to identify possible S106 or CIL funding to strengthen the bid.



- The Chair explained the annual Capital Funding process and highlighted the need to submit a bid for this cycle with a strong case. External funding and support would help.
- A Member (London Council for Recreation and Sport) requested a strong HHCC response as if the works to the track did not go ahead it could affect the Heath's ability to host big sports events. It was agreed there was a need to get Member support for this project and prioritise the track's importance. Bidding again for Capital Funding in a year was not regarded as a realistic option.
- A Member (Representative of Clubs using facilities on the Heath) noted their experience in managing and refurbishing tracks and offered assistance with this project.

## **Events**

- Concerning the proposal to hold a Christmas fayre event at East Heath, a Member (Friends of Kenwood) noted Christmas trees were already sold by Pines and Needles in Kenwood. It was hoped both sites could work together when planning Christmas events.
- The Highgate Harriers Night of 10,000m Personal Bests event has been rescheduled to 14 May 2022.
- With regards to weddings, 15 had taken place this year with a further 7 planned, and 15 booked for 2022. It was noted that Government had introduced a trial, allowing non-covered spaces to host ceremonies. This would allow two additional locations within the Hill Garden and Pergola to facilitate ceremonies.

## **Swimming**

- Officers confirmed the Lido and Bathing Ponds would revert to winter season opening hours from 20 September. Discussion with the Winter Swimming Club had also taken place in relation to the Mixed Pond extended opening during September/October 2021 (noting that the pond would usually be closed during the winter season).

## **Cafés**

- The tender process for the Golders Hill Park Café will be undertaken during autumn/winter 2021.

## **Fundraising**

- A Member (Hampstead Conservation Area Advisory Committee) stated that Heath's donation page was very different to other donations pages which normally included a totaliser, options to leave message, retweet to friends, etc.

- The Chair agreed more work was needed and Officers were keen to make the site comparable with others.

**RESOLVED – That Members:-**

- Provide feedback in relation to the proposals to manage drone usage via a drone use request form, as set out in paragraph 6;
- Provide feedback in relation to the proposal to continue the biodiversity interpretation boards for the further year, as set out in paragraphs 9-11;
- Provide feedback in relation to the Heath Extension Concept Design (appendix 3) as set out in paragraphs 12-14.

**7. HEATH HANDS UPDATE**

Members received a volunteering update from Heath Hands.

Members were advised that volunteering activity was almost back to normal, and Heath Hands had contributed over 4,000 volunteering hours at the Heath. Other highlights included five paid work experience placements, a large number of youth groups and activities in September and October and a successful funding bid from the National Lottery Heritage Fund.

**8. QUESTIONS**

There were no questions.

**9. ANY OTHER BUSINESS THAT THE CHAIR CONSIDERS URGENT**

The Chair asked Members for their views, regarding meeting arrangements moving forward. The options for consideration were:

- 1) to continue to meet online with meetings being recorded;
- 2) hybrid meetings held at Guildhall, allowing for meetings to continue to be recorded and allowing Members the option of attending in person or online;
- 3) resume in person meetings at Parliament Hill meeting room, noting meetings would not be recorded.

The Chair noted that meetings relating to the Open Spaces were some of the most watched on the Corporation's YouTube channel. The Chair highlighted the wider opportunities for consultation and transparency of conversations when meetings were recorded.

The Chair confirmed that pre-meeting walks would continue. The Chair also noted the wide membership of the Committee which was not fully representative of the demographic of the area it represented.

----

**RESOLVED** - With two hours having elapsed since the start of the meeting, in accordance with Standing Order No. 40 the Committee agreed at this point to extend the meeting by up to thirty minutes.

----

Members were asked what their preference was for HHCC meetings and how they engaged the groups they represented. The following responses were made:

- **Dartmouth Park Conservation Area Advisory Committee** - in person meetings at Guildhall or Parliament Hill. Represents 10 members with decisions to 30-40 people.
- **South End Green Association** – happy with virtual meetings with a live audience but ok with meeting in person at Guildhall.
- **London Wildlife Trust** - prefer hybrid and report to 10 people plus newsletter to 300 people.
- **Hampstead Garden Suburb Residents' Association** – had difficulties with MS Teams but in principle hybrid meetings best solution when noting the wider audience ability and transparency. Moving forward a Facebook group could be used to share a link to the meeting agenda if appropriate.
- **Highgate Society** – happy with virtual but prefer Zoom. Live meetings easier to have conversations so would go for hybrid. Report to committee of 15 people.
- **Marylebone Birdwatching Society** – hybrid a sensible option with walks assisting conversations. Report to 120 members and update at meetings.
- **Friends of Kenwood** – Hybrid at Parliament Hill preferable but would attend Guildhall. Report back at each meeting 10 main members but 600 members overall, plus lots of social media engagement.
- **Heath and Hampstead Society** – favour face to face meetings. Report back to 12 members plus newsletter to 3,000 people.
- **Mansfield Conservation Area Advisory Committee & Neighbourhood Association Committee** – dependant on infection rate and vaccine immunity, would be reluctant to meet in Parliament Hill room in person. Report back to committee which are exercised about relevant issues and discuss heavily.
- **London Council for Recreation and Sport** – face to face preferred but would do hybrid if at a different local venue. Engage London-wide disseminating information with Camden on nature, heath and sport.
- **Hampstead Rugby Club** – happy with virtual or hybrid. Report to members and disseminate information to over 600 people.
- **Representative of Clubs using facilities on the Heath** – hybrid meetings. Do not report to a single committee.
- **Hampstead Conservation Area Advisory Committee** – hybrid meetings best option. Report and disseminate to 10-15 people and run website.
- **Vale of Health Society** – hybrid best but prefer Zoom over MS Teams. Report to 6 active members plus 70 others on individual matters.

With regards to potential larger and local venues, Members were encouraged to provide suggestions to the Town Clerk.

10. **DATE OF NEXT MEETING**

The date of the next meeting on 1 November 2021 was noted.

**The meeting ended at 7.51 pm**

-----

Chairman

**Contact Officer: Leanne Murphy**  
**[leanne.murphy@cityoflondon.gov.uk](mailto:leanne.murphy@cityoflondon.gov.uk)**

## **HAMPSTEAD HEATH, HIGHGATE WOOD AND QUEEN'S PARK COMMITTEE** **Wednesday, 29 September 2021**

Minutes of the hybrid meeting of the Hampstead Heath, Highgate Wood and Queen's Park Committee held at Committee Rooms, 2nd Floor, West Wing, Guildhall on Wednesday, 29 September 2021 at 4.00 pm

### **Present**

#### **Members:**

Anne Fairweather (Chair)  
William Upton QC (Deputy Chairman)  
Karina Dostalova  
Deputy David Bradshaw  
Alderman Prem Goyal  
Michael Hudson  
Wendy Mead  
Deputy John Tomlinson  
John Beyer  
Richard Cornelius  
Pam Hampshire  
Caroline Haines (Ex-Officio Member)  
Oliver Sells QC (Ex-Officio Member)

#### **In attendance:**

Paul Jeal – Swimming Facilities Supervisor

#### **Officers:**

Colin Buttery	- Director of Open Spaces
Richard Gentry	- Acting Superintendent of Hampstead Heath
Jonathan Meares	- Highgate Wood, Conservation & Trees Manager
Katherine Radusin	- PA to Superintendent of Hampstead Heath
Declan Gallagher	- Operational Service Manager
Yvette Hughes	- Business Manager, Open Spaces Department
Gerry Kiefer	- Open Spaces Business Manager
Graham Nickless	- Group Accountant, Chamberlain's Department
Abigail Tinkler	- Head of Learning, Open Spaces Department
Leanne Murphy	- Town Clerk's Department

#### **1. APOLOGIES**

Apologies were received from Alderman Gregory Jones, Jason Pritchard and Yianni Andrews.

#### **2. MEMBERS DECLARATIONS UNDER THE CODE OF CONDUCT IN RESPECT OF ITEMS ON THIS AGENDA**

There were none.

3. **MINUTES**

**RESOLVED**, that the public minutes of the meeting held on 26 May 2021 were approved as a correct record.

4. **HAMPSTEAD HEATH CONSULTATIVE COMMITTEE MINUTES (TO FOLLOW)**

The draft public minutes of the Hampstead Heath Consultative Committee (HHCC) meeting held on 6 September 2021 were received.

5. **FRONT LINE WORK UPDATE**

Members noted an update from the Health Team regarding Front Line Work.

The Committee was provided with an update from Paul Jeal, Supervisor of the Heath's swimming facilities. Members thanked the Swim Team for their phenomenal achievement to ensure the public were able to swim, which was a significant help to everyone's health and wellbeing during the pandemic and after.

6. **SUPERINTENDENT'S UPDATE**

Members considered a report and received a verbal update from the Acting Superintendent concerning matters relating to Hampstead Heath, Highgate Wood and Queen's Park. The following points were made:

**Hampstead Heath Drone Guidance 2021**

- Members were advised that HHCC Members expressed concern that the updated drone guidance was not strong enough. Drone incident statistics were provided to the Committee who noted that in the past seven years, there had been 110 incidents (16 per year). Officers were working with the Comptroller to address the issues and a Drone Request Form had been signed off by the Management Team and Heath Constabulary. It was noted that there were few occasions that drone use was allowed which required permission following approved Risk Assessments.
- A Member stated that drones were a widespread problem across open spaces and felt their use should be severely restricted for emergency services only. The Member felt that nobody had the right to film people in public space without consent, which was almost impossible to obtain.
- A Member queried how filming use was monitored as the guidance stated that the Drone Request Form was not mandatory. Officers agreed to seek further legal advice on whether the form could be made mandatory.
- A Member suggested reviewing the Heath's byelaws and including this within the guidance.

- The Chair noted that drones were used by Officers to monitor degradation of the land post-pandemic and extreme weather which was useful. It was agreed balance on the guidance was needed.
- Officers confirmed it was a complex area and the same arguments could be made for use of phones, video recorders and cameras. The key concern was what the footage was being used, if the drone has a camera, then the Data Protection Act and GDPR could apply.
- Members were supportive of the guidance and form but were concerned with how they could be enforced as drone pilots could be far away. Officers agreed this was a challenging issue. The Committee requested that this continued to be reviewed if the guidance did not work.

### **Divisional Plan 2021-24**

- Members noted the Divisional Plan for 2021-24 provided at Appendix 2.

### **Playgrounds**

- Members were advised that works at two of the Heath's playgrounds had been completed, with work to begin at the Preachers Hill playground in October 2021.
- With regards to the Heath Extension Playground Project, there had been significant public engagement and the feedback received would be considered. A fundraising page with opportunities to donate to the project would follow later in the year.

### **Professional Dog Walking Licence Scheme**

- A request was made to delegate authority to the Town Clerk, in consultation with the Chair and Deputy Chairman of the Committee and the Superintendent, to finalise and implement the documentation in respect of the Professional Dog Walking Licencing Scheme.
- Officers continued to consult with the Hampstead Professional Dog Walkers Association. To inform a zoned approach to licencing, Professional Dog Walkers currently using the Heath were asked to provide details of the areas of the Heath they use. It was proposed that 10-15 licenses be issued per zone.
- The Chair reminded Members that this had previously been discussed at length by the Committee to agree the parameters, but the scheme implementation had been delayed due to Covid. It was hoped this could be approved and brought in Without further delay.
- Members discussed the key change of moving from 40 to 70 licences. It was acknowledged that the load would be spread across six zones. It

was also noted that AM/PM licenses were no longer being proposed and that Licences would enable Professional Dog Walkers to walk at any time of the day.

- A Member was concerned that people might trade the licences as they were valuable and stressed the need to have rules to ensure licences were not transferable. Officers confirmed they had previously sought legal advice concerning the possible trading of licenses and will ensure licences were issued to individuals.
- A Member highlighted the need to consider survey data (such as breeding birds) when mapping the six zones. complimented breeding birds. It was noted that dog walkers would be made aware of conservation areas within zones, which may be seasonal.
- A Member stated that English Heritage supported the Dog Walking Licence Scheme proposals and would bring in a similar scheme for Kenwood.
- Members were supportive of the changes and approved the request for delegate authority to progress with the scheme.

## Planning

- The Superintendent updated Members on the following planning applications:
  - **Jack Straws Castle (2020/1828/P).** Members were informed of two issues concerning planning permissions for two dwellings near the boundary of the Car Park and a party wall. A surveyor has been appointed to investigate these concerns.
  - **Murphy's Yard.** It was noted that the proposal for a large residential site of commercial tower blocks had received significant local resistance and it would affect Heath views.
  - **55 Fitzroy Park (2018/3672/P).** A decision had not been determined, and Officers remained concerned by drainage issues and the impact on a pond used as a bird sanctuary.
  - **37 Lancaster Road.** Members were informed that planning had been granted but the project, which backed onto Highgate Wood, would have an impact on ecology, wildlife and trees.
  - **Cranwell House.** This development has received significant local opposition, due to a boundary issue with Highgate Wood and the impact on wildlife.
- With regards to Jack Straws Castle, a Member felt it was essential for the City Corporation to write to the land owner and inform them that anything on City Corporation land would be classed as trespassing. An injunction rather than damages was also recommended.



- A Member voiced support for action against Murphy's Yard and the position against oversailing at Jack Straws. There was concern this would be a landmark case for huge tower blocks and Members did not want to set a precedent for developments affecting views from the Heath.
- .
- A Member noted there was a difference between temporary oversailing, whereby a fee could be requested, and permanent oversailing which should be challenged. Officers confirmed the scaffolding at Jack Straws had been removed and that other matters were being dealt with.

### **Extreme weather**

- The Superintendent advised that heavy rainfall on 12 July 2021 had led to higher-than-normal water levels at the Heath's Pond. Due to the impacts on water quality, the Bathing Ponds were closed. The Kenwood Ladies' and Highgate Men's Bathing Ponds reopened on 20 July and the Mixed Bathing Pond on 21 July.
- In response to a query regarding how often this was likely to happen, Officers explained this was difficult to predict but that extreme changes in weather patterns were being experienced more frequently. The key issue was water not being able to percolate the ground and subsequently entered the Ponds.
- Officers confirmed water quality was tested regularly and must adhere to strict classifications. The Bathing Ponds are closed if water quality is compromised.
- The Deputy Chairman was keen that this be kept under review as preparations would need to be made if this was expected to occur more often. Members were satisfied Officers were making correct and safe decisions and asked that Thames Water's obligations be monitored to ensure they are fulfilling their role.

### **Capital Projects**

- Members were informed that a bid concerning the resurfacing of the Parliament Hill Athletics Track had been submitted and Officers were liaising with the London Borough of Camden, Stakeholders and external sports organisations to seek funding support for the bid.
- It was noted that the Athletics Track running surface was at the end of its useful life. Members were supportive of the bid and noted that the facility was well used and hosted important sporting events, which would not be able to continue if the bid was unsuccessful.

- In response to a question regarding grants from other charities, the Chair confirmed that many charities were still struggling and that funding opportunities not currently available. It was noted that Officers were speaking with officers from the London Borough of Camden, seeking CIL funding.

**RESOLVED – That Members:-**

- Approve the Drone Guidance attached at appendix 1, as set out in paragraphs 4-8;
- Grant delegated authority to the Town Clerk, in consultation with the Chair and Deputy Chairman of the Hampstead Heath, Highgate Wood & Queen's Park Committee and the Superintendent of Hampstead Heath, to finalise and implement the documentation in respect of the Professional Dog Walking Licencing Scheme ("the Licencing Scheme") which is required to commence the Licencing Scheme in October 2021, as set out in paragraphs 14-15;
- Approve the proposal to hold a Christmas Fayre on Hampstead Heath as set out in paragraphs 30-33.

**7. OPEN SPACES DEPARTMENTAL BUSINESS PLAN 2020/21 - YEAR END PERFORMANCE REPORT**

Members noted a report of the Director of Open Spaces regarding the Open Spaces Department's delivery of its 2020/21 Business Plan and Year End Performance report.

RECEIVED.

**8. TWO YEAR REVIEW OF THE OPEN SPACES DEPARTMENT'S LEARNING PROGRAMME 2019-21**

Members noted a report of the Director of Open Spaces providing Members with an overview of the Open Spaces learning programme from 2019 to 2021.

Members were informed that the programme has received core funding since April 2019 and delivers school, youth, play, community and volunteering opportunities to children and adults at Hampstead Heath, West Ham Park and Epping Forest.

Members were impressed by the engagement achieved and thanked the Team for their invaluable work.

RECEIVED.

**9. QUESTIONS ON MATTERS RELATING TO THE WORK OF THE COMMITTEE**

**Swimming Judicial Review**

The Deputy Chairman requested an update. Members were informed that a hearing was scheduled for 9-10 November 2021 and Officers were working with the Comptroller and City Solicitors.

**10. ANY OTHER BUSINESS THAT THE CHAIR CONSIDERS URGENT**

There was none.

**The meeting ended at 5.39 pm**

-----

Chair

**Contact Officer: Leanne Murphy**  
**[leanne.murphy@cityoflondon.gov.uk](mailto:leanne.murphy@cityoflondon.gov.uk)**

This page is intentionally left blank



## Hampstead Heath Sports & Wellbeing Forum

Tuesday 12 October 2021, 5.30pm

Online ([Meeting Recording](#))

### Attending

Anne Fairweather (Chair)	AF	Chair, Hampstead Heath Management Committee
David Walton	DW	Hampstead Heath Consultative Committee
Eleanor Kennedy	EK	Parliament Hill Fields Lido
Mary Powell	MP	Kenwood Ladies' Bathing Pond
David Gilbert	JW	Highgate Men's Bathing Pond
Charles Marks	CM	Mixed Bathing Pond
Joseph Lowe	JLo	Athletics
Sandy Nairne	SN	Licensed Activity - Croquet
Simon Taylor	ST	Rugby
Robert Gibbs	RGi	Angling
Marc Hutchinson	MH	Licensed Activity - Winter Swimming Club
Anandi Shah	AS	Licensed Activity - ParkRun
Rudolf Benjamin	RB	Tennis coaching
Karin Oleinikova	KO	Heath Hands
Colin Houston	CH	Heath Hands
Debbie Bush	DB	Pro-Active Camden (PAC).
Ray Booth	RB	Mental Health
John Carrier	JC	Target groups and underrepresented groups
Richard Gentry	RG	Acting Superintendent, Hampstead Heath
Paul Maskell	PM	Officer from Hampstead Heath
Declan Gallagher	DG	Officer from Hampstead Heath

### Apologies

Richard Sumray	RS	Hampstead Heath Consultative Committee
Jo Lynch	JLy	Target groups and underrepresented groups
Richard Caylor	RC	Bowls & Croquet
Dr Frankie Blackmore	FB	Target groups and underrepresented groups
Jane Myatt, GP	JM	Target groups and underrepresented groups
Cindy Galvin	CG	Trustee representing Heath Hands
Ruth Hallgarten	RH	Kenwood Ladies' Bathing Pond
Mike Sands	MS	Mixed Bathing Pond

## Meeting Action Points & notes

### Action Points of the last meeting (5.7.2021) & matters arising

Angling at the Men's Pond North Bank - Following site meetings with the Hampstead & Highgate Angling Society (HAHAS), the Heath Ecologist will undertake a review of the Hampstead Heath Ponds and Wetlands Strategy in relation to the recommendations relating to Angling access at the Men's Bathing Pond North Bank.

ACTION -COL to further engage with Walk Talk Walk regarding a Hampstead Heath event.

ACTION -COL to share link to the Hampstead Heath website updated walking page.

[\(Walks and trails in Hampstead Heath - City of London\)](#)

### Capital Bid for the Athletics Track

A Capital Funding Bid has been submitted for the Parliament Hill Athletics Track for reconstruction of the Track surface. The funding request (£1.52m) will be considered by the City of London Resource Allocation Committee in late 2021. External funding, to support the bid, is being sought and Officers will continue to engage with Stakeholders as the process progresses.

ACTION -DG to undertake an Athletics Track site meeting with DW at Finsbury Park Athletics Track.

### Social Prescribing / Health Connections

The Heath Team have worked with the Founder of Mental Health Swims to arrange swim sessions at the Lido (approx. 35/40 people). A session has also been arranged at the Mixed Bathing Pond on 16 October (approx. 27/30 people). Since May, the Heath Team have also worked with the NHS to arrange regular cold water swim sessions for key Workers, led by an open water Olympic swimmer. A meeting has been arranged to consider arrangements for 2022. The Lido has also been made available for an hour after closing (during winter season hours) to facilitate swims for people who need to shield/ are particularly vulnerable to Covid-19.

Heath Hands have had a busy summer and have worked to re-establish connections. Funding is in place to run nature mindfulness programmes to support mental health, and forest bathing sessions are also provided in support of mental health. The Heath Hands Team have worked with the Lido to arrange swim sessions for groups they have been working with in order to help build their confidence with the facilities around Parliament Hill.

A new Social Prescribing group is being developed within Camden to focus on embedding Social Prescribing within the integrated care partnerships which are being developed. The model will bring various offers together to provide seamless connections for Camden residents. The group is at an early stage, with a second meeting taking place tomorrow.

ACTION -DB to provide an update on the Camden Social Prescribing group at the next Forum meeting.

The Men's Bathing Pond have a number of swimmers who would be able to support a buddy system, to help introduce new/inexperienced swimmers to open/cold water swimming.

### Give it a go/ Taster sessions

Heath Hands organise a annual Community Event around the Parliament Hill bandstand 3/4 weeks ahead of Give it a go. Past events have included guided walks and tai-chi. The event could support Clubs/Associations putting on taster sessions ahead of the Give it a go.

It was suggested that taster sessions can be tailored to target specific groups, such as 'this girl can'. Targeting larger community groups can help to encourage participation.

ACTION – Clubs/Associations able to support Give it a go to get are encouraged to get in touch with the Leisure & Events Manager.

ACTION – Clubs/Associations arranging tester sessions to get in touch with the Leisure & Events Manager to discuss how these can be supported and promoted by the Heath and Heath Hands.

### Camden's Health & Wellbeing strategy and strategic focus on Children & Young People(including weight and mental health).

The Strategy is being refreshed and will be going out for consultation later in October 2021. The strategy aims to draw together all parts of the Camden Health and Wellbeing sector.

ACTION -Strategy to be shared with the Forum for feedback.

The health related behaviour survey (a cross health survey) across two secondary school age groups is currently being undertaken across Camden. Tackling obesity in children is a priority for Pro-Active Camden, and this target group has been informed by past survey data.

A review of Camden youth services is also being undertaken (including the leisure, sports and arts offers), and there is a push for feedback from young people.

### Swimming Capital Bid Project

An Architect and Project Manager have been appointed. The project is at the formative stage, and engagement and consultation with users will follow.

ACTION -COL Conservation Team to review Men's Bathing Pond North Bank ground conditions, to ensure safe access for Licensed Angling sessions.

### AOB - Free Morning Swims for U16's & 60+ at the Bathing Ponds

A proposal from the Men's and Ladies' Bating Ponds was discussed, in relation to extending the free morning swim arrangements to align with Transport for London's free 60+ travel arrangements.

ACTION -COL to review proposal as part of the annual fees and charges review for 2022/23.

### Date of the next meeting & Meeting Format

ACTION -January 2022 meeting date options to be circulated to Members.

ACTION -Forum Members to confirm preference in relation to the format of future meetings (online / in person at Parliament Hill).

This page is intentionally left blank



<b>Committee(s):</b> Hampstead Heath Consultative Committee	<b>Date(s):</b> 01/11/2021
<b>Subject:</b> Superintendent's Update	<b>Public</b>
Which outcomes in the City Corporation's Corporate Plan does this proposal aim to impact directly?	<b>1, 2, 3, 4, 5, 11 &amp; 12</b>
Does this proposal require extra revenue and/or capital spending?	No
If so, how much?	
What is the source of Funding?	
Has this Funding Source been agreed with the Chamberlain's Department?	
<b>Report of:</b> Executive Director, Environment	<b>For Discussion</b>
<b>Report author:</b> Richard Gentry, Superintendent	

## Summary

This report provides Members with an update on matters relating to Hampstead Heath since September 2021.

## Recommendation

Members are asked to:

- Provide feedback in relation to the Network Rail Fence Replacement proposal, as set out in paras 14-18.

## Main Report

### Coronavirus Emergency Response and Issues

1. A number of Covid-19 control measures remain in place across public and staff facilities, in line with guidance.

### Constabulary

2. The Constabulary are working in collaboration with colleagues from Epping Forest as they introduce Fixed Penalty Notices (FPN).
3. The Constabulary are in continual discussion with the Metropolitan Police (MPS). There have been recent incidents of unlicensed music events on the Heath which constables have responded to. These events have been reported to the MPS
4. Constables are investigating a number of recent dog on dog attacks which have occurred on Hampstead Heath.

## **Management Framework**

### Divisional Plan

5. The Hampstead Heath Divisional Plan 2021-24 (appendix 1) sets out the current position in relation to project work being undertaken across the Division.
6. Officers would like to draw Members attention to the following Divisional Plan projects:
7. Divisional Radio System (HH7) – The Acting Superintendent is in discussion with a London based radio supplier to assist with the relocation of radio equipment. The equipment will be moved to an alternative mast in the Hampstead area. At the time of writing, final checks are being completed. These checks will ensure that the proposed mast site is suitable for the City Corporation's needs, enabling effective radio communications across the Division. The Acting Superintendent is making arrangements for existing City Corporation radio equipment, e.g. antennas to be decommissioned and removed from the St Columba Aerial Mast location.
8. Review the High-Level Asset Management Plan (AMP) 2018 - 2021 (HH12) – A review of the 2018-21 AMP has been undertaken. This has informed the drafting of the 2021-23 AMP, which is attached at appendix 2.
9. Planning (HH26) – A verbal update on current planning application will be provided at the meeting.

### Annual Work Programme (AWP)

10. The Hampstead Heath Annual Work Programme Projects 2021-22 is attached at appendix 3. A six month RAG status has been provided in relation to the progress made towards implementing each project.

## **Cyclical Works Programme (CWP)**

11. Upcoming CWP works include:
  - Parliament Hill Highgate Road Entrance – Installation of rising bollards and removal of existing vehicle barrier.
  - Parliament Hill Paddling Pool – Wall repairs.
  - Mixed Bathing Pond – Fencing replacement.

## **Capital Projects**

12. With regard to the Capital Bid Project for the Swimming Safety, Security and Access Improvement. A Project Architect has been appointed and a project timeline will be drafted during the autumn.

## **Network Rail – Fence Replacement**

13. Network Rail have approached the Hampstead Heath Management Team to replace the existing 330 metres of metal fencing along the railway embankment between the Gospel Oak entrance to the Lido Facility and the One O'clock Club.

14. Network Rail first requested to undertake these works in 2014, but postponed due to concerns raised around damage to the line of mature trees along the path running parallel with the fencing and the industrial style fencing proposed.
15. At a site meeting on the 13 October 2021, Network Rail representatives outlined their ongoing concerns about the security of the site and their duty of care to prevent unauthorised access onto the railway and possible serious injury or death. There have been a number of incidents where individuals have managed to climb over the current fencing and gain access. If access is not allowed from the Heath, Network Rail will be forced to carry out the fencing replacement from their own land which will necessitate significant vegetation and habitat clearance and major removal of screening of the Gospel Oak Station and rail line northwards.
16. Network Rail's revised method statement involves removing the existing 1.2 metre fencing at ground level and installing a 1.8 metre high steel palisade fence painted black. The Hampstead Heath Management Team have identified risks to trees and requested conditions to protect the trees during the installation of the replacement fencing. The work will be carried out in 30 metre sections with a heras type fence cordon securing the work site. Each section will be completed in approximately one day. At the end of each day the new fencing will be secured against the old fence for security, and the work will progress northwards and be completed in approximately 3 weeks. It is proposed to commence works in November 2021.
17. Special attention will be given to tree protection, and all trees within the active working area will be fenced off during the dismantling of the old fence and installation of the new palisade fencing. There will be a member of the Tree Team on call each day to oversee the works and liaise with the contractor supervisor on the locations of the new palisade fencing posts (which will be hand dug) in order to minimise damage to the adjacent trees and their respective root systems. The Tree Team will closely monitor and supervise any root severance should this be required.
18. Pedestrians will be diverted around the cordoned off working areas and encouraged to use the pathway leading up to the Lido entrance and then around the western side path and back towards the One O'clock Club. An area will be fenced off for Contractor vehicles in the Lid car park. All materials and plant will be removed from site overnight and the working fenced off cordon well secured.

### **Corporate & Strategic Implications**

19. The projects and works outlined in this report contribute towards the achievement of the three aims set out in the City of London Corporate Plan 2018-23: Contribute to a flourishing society, Support a thriving economy and Shape outstanding environments.
20. The projects and works outlined in this report also contribute towards the three objectives and outcomes set out in the Open Spaces Business Plan 2020-21 (a)

Open spaces and historic sites are thriving and accessible, (b) Spaces enrich people's lives and (c) Business practices are responsible and sustainable.

21. The projects and works outlined in this report contribute towards the achievement of the Hampstead Heath Management Strategy 2018-2028 Strategic Outcomes A: The Heath is maintained as a flourishing green space and historic landscape, B: Improved quality of life for Heath visitors, C: The Heath is inclusive and welcoming to a diverse range of visitors and D: Greater number of and diversity of People taking care of the Heath.

#### Financial Implications

22. Donations are currently being sought for the following projects:

- Hampstead Heath Extension Playground (£40,000)
- Model Boating Pond Island - wildlife sanctuary (£50,000)
- Bird and mammal shelters (£5,000)

23. Donations can be made via the City of London website: <https://www.cityoflondon.gov.uk/things-to-do/green-spaces/hampstead-heath/donate-to-hampstead-heath>

#### Resource Implications

24. Staff resources are being prioritised keeping the Heath open, safe, accessible and secure.

#### Climate Implications

25. The City of London launched its Climate Action Strategy in October 2020 and the strategy is now in implementation stage. A key part of the strategy is conserving and enhancing biodiversity alongside reducing the City of London's carbon emissions. This will be the main objective at Hampstead Heath in the short term, especially following the impact of exceptionally high number of visitors due to COVID-19.

#### Legal Implications

26. No Impact.

#### Risk Implications

27. There is a risk that works and staff resources could be further impacted by COVID-19. Risks are monitored and recorded through the Departmental Risk Register

#### Equality Implications

28. No Impact.

#### Security Implications

29. Security implications are addressed in the emergency response to COVID-19 and are being monitored and recorded through the Departmental Risk Register.

#### **Appendices**

- Appendix 1 – Hampstead Heath Divisional Plan 2021-24 (October 2021 update)

- Appendix 2 – Draft Asset Management Plan 2021-23
- Appendix 3 – Hampstead Heath Annual Work Programme (6 month RAG Status update)

**Richard Gentry**

Acting Superintendent, Environment Department.

T: 020 7332 3322

E: [richard.gentry@cityoflondon.gov.uk](mailto:richard.gentry@cityoflondon.gov.uk)

This page is intentionally left blank

## HAMPSTEAD HEATH, HIGHGATE WOOD, KEATS HOUSE AND QUEEN'S PARK DIVISIONAL PLAN 2021-2024

### Introduction

This Divisional Plan is part of the Management Framework for the Hampstead Heath, Highgate Wood, Keats House and Queen's Park Division, which sits within the City of London Corporation's Environment Department.

The Division is comprised of three individual charities, each with their own Charitable Objectives:

Hampstead Heath (803392)	The preservation of Hampstead Heath for the recreation and enjoyment of the public.
Highgate Wood & Queen's Park (232986)	The preservation in perpetuity by the City of London Corporation of the open spaces known as Highgate Wood and Queen's Park, Kilburn for the use by the public for exercise and recreation.
Keats House (1053381)	To preserve, maintain and restore for the education and benefit of the public the house and grounds known as Keats House as a museum and memorial to John Keats.

The Divisional Plan is part of a hierarchy of strategies and plans which form a 'golden thread', translating City Corporation Strategic Outcomes into operational delivery, as follows:

- Corporate Plan, 2018-23.
- Open Spaces Business Plan, 2021-22.
- Ten-year Management Plans that set strategic directions for each Charity.
- A three-year Divisional Plan that guides implementation.
- An Annual Works Programme and Project Plans, supported by detailed specifications and guidance.
- Performance Development Approach (PDA), detailing individual's targets to achieve the outcomes and objectives above.

The Divisional Plan is written for a three-year rolling period and is reviewed and updated annually to identify milestones achieved and inform the projects and priorities for future periods. A version of the Divisional Plan has been developed for each Charity.

**Criteria for Divisional Plan Projects:**

The definition and criteria of projects to be included in the Divisional Plan are as follows:

- Projects requiring formative community engagement and consultation.
- Capital Projects over £50k.
- Projects spanning more than one financial year.
- Complex and high-risk projects.
- Projects with involvement of other Divisions, for example the City Surveyors.



Ref	Project Details	Key Dates	HH Mgt Strategy Outcomes	Corporate Plan Aims	Notes on progress (October 2021 updates in <i>italic text</i> )
HH1	<p><b>COVID-19 Impact Recovery Programme</b> Continue to respond to Government Guidance and maintain COVID Secure workplaces and facilities.</p> <p>Implement Annual Work Programme interventions to address impacts on wildlife, erosion, compaction, path maintenance, waymarking and signage improvements.</p> <p>Prioritise enforcement taskings to support the protection of the Heath and to ensure people feel welcome and safe.</p>	On-going project subject to annual review.	<p>Outcome A. Priority 2.</p> <p>Outcome B. Priority 4.</p> <p>Outcome D. Priority 9.</p>	<p>Shape outstanding environments.</p> <p>Contribute to a flourishing Society.</p>	<p>Annual Work Programme agreed by the Hampstead Heath, Highgate Wood and Queen's Park Committee (HHHWQPC) on 26.5.2021, following consultation with the Hampstead Heath Consultative Committee.</p> <p>Ground restoration works were commenced across the Heath in Spring 2021 and good progress has been made regards re-establishing grass and vegetation. Nine veteran tree are currently temporarily fenced off with stock fencing to protect the soil and roots from compaction.</p> <p>The 2021 Events Programme has resumed from July 2021, with a number of events planned for autumn/winter 2021.</p> <p>Covid-19 secure Risk Assessments remain in place along with social distancing measures at public and staff facilities, such as the swimming facilities and staff bothies.</p>
HH2	<p><b>Deliver Efficiencies, Savings and Income Generation Projects</b> Implement the approved Budget for 2021/22.</p>	<p>Revised Estimates 1/10/2021. Deliver balanced budget by 31/3/2022.</p>	<p>Outcome D. Priority 10.</p>	<p>Support a thriving economy.</p> <p>Shape outstanding environments.</p>	<p>As well as implementing efficiencies, additional income streams are being investigated.</p> <p>Regular monitoring of the 2021/22 Budget is taking account of the ongoing COVID-19 impacts, including reduced income from events.</p>

Ref	Project Details	Key Dates	HH Mgt Strategy Outcomes	Corporate Plan Aims	Notes on progress (October 2021 updates in <i>italic text</i> )
HH3	<b>Support Implementation of the Target Operating Model (TOM)</b> Review operational arrangements to align with the TOM.	Project Launched 2020/21.  Phased Implementation 2021/22.	Outcome A, Priority 3.  Outcome D, Priority 10.	Contribute to a flourishing Society.  Support a thriving economy.  Shape outstanding environments.	Town Clerk's briefings have been shared with staff and signposted to the Intranet page.  The Executive Director of Environment is now in post.  <i>Structure reviews and staff engagement, aligning to the TOM principles are taking place.</i>
HH4	<b>Develop our Workforce</b> Deliver a range of initiatives to ensure the health, well-being, learning and development of our workforce.	Launch PDA's 31/3/2021.  PDA Mid-Term Review 1/10/2021.  PDA Year-End Review 31/3/2022.	Outcome B, Priority 4.  Outcome D, Priority 10.	Shape outstanding environments.  Contribute to a flourishing Society.	Performance Development Approach (PDA) continue to be used to discuss and plan staff development.

Ref	Project Details	Key Dates	HH Mgt Strategy Outcomes	Corporate Plan Aims	Notes on progress (October 2021 updates in <i>italic text</i> )
HH5	<p><b>Celebrate 150<sup>th</sup> Anniversary of Hampstead Heath Act</b></p> <p>Developing outcomes for learning, volunteering and wider participation and support.</p> <p>Work in Partnership with the Heath &amp; Hampstead Society to design and install a series of information panels.</p>	<p>Agree information panel locations 31/3/2021.</p>	<p>Outcome A, Priority 3</p> <p>Outcome B, Priority 4.</p> <p>Outcome C, Priority 5 &amp; 6.</p> <p>Outcome D, Priority 7, 8 &amp; 10.</p>	<p>Contribute to a flourishing Society.</p> <p>Support a thriving economy.</p> <p>Shape outstanding environments.</p>	<p>Officers have developing a communications plan to celebrate this anniversary as a community.</p> <p>Five biodiversity display boards have been installed across the Heath, with a further board installed at the West Meadow on the Kenwood Estate. The boards have been installed in partnership with the Heath &amp; Hampstead Society and the interpretation reflects the four seasons to provide information about habitats and species found on the Heath. The Heath &amp; Hampstead Society have proposed that the biodiversity boards be retained for a further year between April 2022 - March 2023, with updated interpretation to be produced and installed on a quarterly basis. The costs of producing the updated interpretation boards will be met by the Society.</p> <p>Following consultation on the concept design for the #Heath150 display, celebrating the history of the 1871 Hampstead Heath Act, the exhibition, consisting of 9 monoliths was installed on the Heath between 23 June - 8 August 2021. The exhibition was well received.</p> <p>A number of events have already taken place in celebration of the 150<sup>th</sup> anniversary during 2021.</p>

Ref	Project Details	Key Dates	HH Mgt Strategy Outcomes	Corporate Plan Aims	Notes on progress (October 2021 updates in <i>italic text</i> )
HH6	<b>Compliance with the ULEZ</b> In order to meet the emission requirements and manage the financial implications of the ULEZ, implement the agreed vehicle replacement plan to minimise the impact upon the environment.	24/10/2021.	Outcome D, Priority 10.	Support a thriving economy.  Shape outstanding environments.	Electric and hybrid vehicles are being hired and leased in order to comply with ULEZ.  <i>Due to supply issues Officers are experiencing delays in obtaining compliant vehicles to replace the current fleet.</i>
HH7	<b>Divisional Radio System</b> Procure an alternative Radio system.	31/11/2021.	Outcome A, Priority 3.  Outcome D, Priority 10.	Contribute to a flourishing Society.  Shape outstanding environments.	Due to a change of landlord, the City Corporation have been notified of a termination of their lease at the Aerial Mast, located at St Columba.  The Acting Superintendent is in discussions with a supplier regarding the use of an Aerial Mast located within the vicinity of the current St Columba mast, and in close proximity to Hampstead village.  <i>Further tests are taking place to ensure that the proposed radio mast is suitable for City Corporation needs, enabling effective radio communications across the Division.</i>
HH8	<b>East Heath Car Park</b> Implement the East Heath Car Park resurfacing,	Work is scheduled to start April 2021.	Outcome A, Priority 2 & 3.	Shape outstanding environments.	City Surveyor have lead on the implementation of this project. The car park re-opened for public use ahead of the Easter Fairs. A number of minor snagging works are being resolved.

Ref	Project Details	Key Dates	HH Mgt Strategy Outcomes	Corporate Plan Aims	Notes on progress (October 2021 updates in <i>italic text</i> )
	drainage and cycle parking improvements.				As part of the works, 8 cycle parking stands have been installed in the car park.
HH9	<b>Playgrounds</b> Implement improvements at the Parliament Hill Adventure (PHA), Vale of Health (VOH) & East Heath (Preachers) (EH) Heath Extension (HE) Playgrounds.	PHA June 2021.  VOH June 2021.  EH June 2021.  HE March 2022.	Outcome B, Priority 4.  Outcome C, Priority 5.	Contribute to a flourishing Society.	Works at the PHA and VOH playground have been completed.  Works at the EH playground are scheduled to commence following the autumn half term, in October 2021.  The Concept Design for the HE playground have been produced and Officers are currently seeking feedback on the proposals (deadline for comments 26.9.2021).  <i>A donation page for the project has been added to the City of London website: <a href="https://www.cityoflondon.gov.uk/things-to-do/green-spaces/hampstead-heath/donate-to-hampstead-heath">https://www.cityoflondon.gov.uk/things-to-do/green-spaces/hampstead-heath/donate-to-hampstead-heath</a></i>  <i>A Project Board meeting is being arranged for November 2021 to discuss the feedback received in regards to the draft concept design.</i>
HH10	<b>Savernake Road Entrance Improvements</b>	Commencing April 2021.	Outcome B, Priority 4.	Contribute to a flourishing	Artwork has been completed on the bridge in partnership with the London Borough of Camden,

Ref	Project Details	Key Dates	HH Mgt Strategy Outcomes	Corporate Plan Aims	Notes on progress (October 2021 updates in <i>italic text</i> )
	Implement improvements in partnership with London Borough of Camden and Heath Hands.		Outcome C, Priority 5 & 6.	Society.  Support a thriving economy.  Shape outstanding environments.	The Von Herkomer Arts Foundation, Heath Hands and the City of London.  Agreed landscaping works will be implemented during Winter 2021/Spring 2022. In partnership with the City of London and Heath Hands.
HH11  Page 38	<b>Cycling</b> Install additional cycle parking at entrances and facilities. Improve cycle signage, waymarking and maps. Where appropriate, work with Partners to implement cycle bursts for children using the Heath to travel to and from school.	Commencing April 2021.	Outcomes A, Priority 3.  Outcomes C, Priority 5 & 6.  Outcomes D, Priority 8, 9 & 10.	Contribute to a flourishing Society  Shape outstanding environments	Working in Partnership with the Camden Sustainability Working Group to improve walking and cycling access across Camden. Following discussion with Members, Officers have contacted the London Borough of Camden to seek an update on the proposal to pilot school cycle bursts on Hampstead Heath, but have received no response to date. The routes proposed for inclusion in the pilot scheme include the footpath extending north of the Lido to join with the Broad Walk, and a route to provide a link from the Broad Walk to the shared use path that runs from East Heath to Spaniards.  Focus areas for HH are signage/waymarking and cycling network around the Heath.  Implementation of this project is being impacted by COVID. Timescales subject to review.

Ref	Project Details	Key Dates	HH Mgt Strategy Outcomes	Corporate Plan Aims	Notes on progress (October 2021 updates in <i>italic text</i> )
HH12	<b>Review the High-Level Asset Management Plan 2018 – 2021</b> Taking account of the impacts of COVID-19 review and update the Asset Management Plan.	December 2021.	Outcome A, Priority 3.  Outcome B, Priority 4.  Outcome C, Priority 5 & 6.  Outcome D, Priority 8 & 10.	Contribute to a flourishing Society  Support a thriving economy  Shape outstanding environments	A review of the High Level Asset Management Plan (AMP) 2018-2021 has been undertaken and a AMP 2021-24 has been drafted.  <i>The draft AMP will be shared with Members for feedback during Autumn/Winter 2021.</i>
HH13	<b>Golders Hill Park Zoo &amp; Butterfly House</b> Undertake an options appraisal to inform discussions with the Hampstead Heath Consultative Committee regarding the long-term sustainability of the Zoo and Butterfly House.	September 2021 (options appraisal)  <i>Spring 2022 (present options to HHCC)</i>	Outcome B, Priority 4.  Outcome D, Priority 10.	Contribute to a flourishing Society  Support a thriving economy  Shape outstanding environments	Implementation of this project is being impacted by COVID. Timescales subject to review.  Butterfly House remains closed due to the on-going impact of Covid.  The Operational Services Manager has commissioned an options appraisal regarding the long term sustainability of the Zoo and Butterfly house.  <i>Members will be consulted on the future options in 2022.</i>
HH14	<b>Swimming Capital Project</b> Progress through the Capital Project Gateway Procedures a programme of	Implement 2022/23.	Outcome A, Priority 3.  Outcome B,	Contribute to a flourishing Society.	Capital Funding Approved December 2020.  Gateway 2 Report discussed with Stakeholders and Members (March - May 2021).

Ref	Project Details	Key Dates	HH Mgt Strategy Outcomes	Corporate Plan Aims	Notes on progress (October 2021 updates in <i>italic text</i> )
	safety, access and security improvements across the Bathing Ponds and Lido.		Priority 4.  Outcome C, Priority 5 & 6.  Outcome D, Priority 8 & 10.	Shape outstanding environments.	A tender process has been undertaken and a Project Architect will be appointed in September 2021. This will inform the draft timeline for works.  <i>A site meeting has been arranged for mid-November.</i>
HH15  Page 40	<b>Parliament Hill Athletics Track reconstruction</b> To reconstruct the Athletics Track Surface in order to maintain U.K. Athletics (UKA) TrackMark Standard Level 1.	01/09/2021.	Outcome B, Priority 4.  Outcome C, Priority 5.	Contribute to a flourishing Society.  Shape outstanding environments.	Project Status – Amber – Deferred / on a reserve list should funding become available during the current cycle.  A Capital Funding bid has been submitted for consideration during winter 2021.  Officers are seeking to identify and secure external funding streams to support the Capital Funding Bid.
HH16	<b>Master Plan for optimising facilities at Parliament Hill</b> Undertake a review of facilities and buildings at Parliament Hill to inform provision of a visitor centre, maintain suitable accommodation for staff and volunteers, as well as improved sports facilities	June 2022.	Outcome B, Priority 4.  Outcome D, Priority 10.	Contribute to a flourishing Society.  Support a thriving economy.  Shape outstanding	Officers have met with colleagues from the City Surveyor's regards commencing a review, however implementation of this project is being impacted by COVID. Timescales subject to review.



Ref	Project Details	Key Dates	HH Mgt Strategy Outcomes	Corporate Plan Aims	Notes on progress (October 2021 updates in <i>italic text</i> )
	and improved learning facilities.			environments.	
HH17	<b>Sports and Wellbeing Forum</b> Review and update the Terms of Reference and scope of the Sports Advisory Forum to include Health & Wellbeing and move the focus of the Forum to a strategic overview to implement the outcomes of the City Corporation's Sports and Physical Activity Strategy.	2021/22.	Outcome B, Priority 4.	Contribute to a flourishing society.	The inaugural meeting of the Sport and Wellbeing Forum took place on 5 July.  <i>The Forum met again on 12 October 2021. The action points from the meeting are included within the meeting agenda pack. A further meeting is being scheduled for January 2022.</i>
HH18	<b>Promote Health Connections</b> Work together with Partners, including Heath Hands and the NHS, to promote health & wellbeing.	2021/22.	Outcome B, Priority 4.	Contribute to a flourishing society.	Working with Heath Hands, Officers are developing partnerships with local GP's and Social Prescribers, London Boroughs and Pro-Active Camden.  Work is underway to map opportunities to establish health and wellbeing connections across the Boroughs.
HH19	<b>Café Tendering</b> Undertake a tender procurement for the Golders Hill Park Café, Parliament Hill Café, Parliament Hill	<i>Lease Commence GHP 02/2022</i>	Outcome B, Priority 4.  Outcome C, Priority 5 & 6.	Contribute to a flourishing society.  Support	The Parliament Hill and Lido Cafés are currently operating on a tenancy at will arrangement.

Ref	Project Details	Key Dates	HH Mgt Strategy Outcomes	Corporate Plan Aims	Notes on progress (October 2021 updates in <i>italic text</i> )
	Fields Lido Café and the Heath Extension Kiosk.	Heath Extension Kiosk 2022 PH & Lido 01/2023.	Outcome D, Priority 7, 8, 9 & 10.	a thriving economy.	<p>A tendering process for the appointment of a new Lease for the Golders Hill Park Café will be undertaken during autumn/winter 2021.</p> <p>The tendering process for the Heath Extension Kiosk has been pushed back to early 2022 due to Officer workload.</p>
HH20	<b>Dog walking code of conduct and the Professional Dog Walking Licencing Scheme</b> Implement a licencing scheme from April 2021.	Licence Scheme to commence October 2021.	Outcome A, Priority 3.  Outcome B, Priority 4  Outcome C, Priority 5 & 6.  Outcome D, Priority 7, 8, 9 & 10.	Contribute to a flourishing Society.  Support a thriving economy.  Shape outstanding environments.	<p>Members have agreed in principle the Scheme. Dialogue continues with the Hampstead Professional Dog Walkers Association. Officers ran an expression of interest and a mapping exercise has been undertaken. Professional Dog Walkers using the Heath were asked to identify the areas of the Heath which they currently use. This information has informed a zoning approach. Officers have assessed that 70 licences can be issued without the commercial activity impacting on wildlife, the amenity of the Heath, and without causing disruption to recreational users.</p> <p><i>Advertisement of the Licencing Scheme will commence in due course to give notice to Professional Dog Walkers wishing to make a licence application.</i></p>

Ref	Project Details	Key Dates	HH Mgt Strategy Outcomes	Corporate Plan Aims	Notes on progress (October 2021 updates in <i>italic text</i> )
HH21	<b>Fitness training code of conduct and licencing scheme</b> Undertake a consultation and engagement to inform the develop a licencing scheme for Fitness training.	Licence Scheme to commence 2022.	Outcome A, Priority 3.  Outcome B, Priority 4.  Outcome C, Priority 5 & 6.  Outcome D, Priority 7, 8, 9 & 10.	Contribute to a flourishing Society.  Support a thriving economy.  Shape outstanding environments.	An initial scoping workshop took place during December 2019 and further consultation and engagement will take place during autumn/winter 2021/22, supporting the development of the code of conduct and licensing scheme.
HH22	<b>Forest School Licencing Scheme</b> Develop a long-term licencing scheme for Forest Schools.	Licence Scheme to commence September 2022.	Outcome A, Priority 3.  Outcome B, Priority 4.  Outcome C, Priority 5 & 6.  Outcome D, Priority 8 & 9.	Contribute to a flourishing Society.  Support a thriving economy.  Shape outstanding environments.	Officers are engaging with Forest Schools and registering current groups using the Heath. Short Term Licencing arrangements are being implemented for 2021/22.  <i>Discussions are underway to licence a fee paying school based in Hampstead. Officers will be working with the Learning Team to assist with the management of forest school activities on the Heath going forward.</i>
HH23	<b>Golders Hill Park Accessible Car Park</b> Undertake a tendering process to appoint a Consultant to develop options which facilitate safe	<i>January 2022</i>	Outcomes B, Priority 4.  Outcome C, Priority 5 & 6.	Contribute to a flourishing Society.	<i>A second tendering process has been undertaken and a Consultant has been identified. Draft options will be presented for Members consideration and feedback during early 2022.</i>

Ref	Project Details	Key Dates	HH Mgt Strategy Outcomes	Corporate Plan Aims	Notes on progress (October 2021 updates in <i>italic text</i> )
	weekend and Bank Holiday opening of the Car Park.				
HH24	<b>Develop Heritage Outcomes</b> Engage with Historic England and local historians to:  Develop a Heritage Conservation Management Plan for the Heath.  Incorporate preservation and interpretation actions to preserve and interpret archaeological and heritage into the existing Compartment Management Plans.	2023/24.	Outcome A, Priority 2.	Shape outstanding environments.	
HH25	<b>Bio-Security Management</b> Proactive management of threats, including pest and diseases which impact upon the condition of trees, plants and wildlife.	2021/22.	Outcome A, Priority 1.  Outcome D, Priority 10.	Support a thriving economy.  Shape outstanding environments.	OPM population stabilised on Hampstead Heath. Monitoring of Carcelia parisitoid continuing as natural control.  Massaria currently stable.
HH26	<b>Planning</b> Regular monitoring of development and planning	2021/22.	Outcome D, Priority 10.	Support a thriving economy.	Quarterly reporting to HHCC and HHHWQPC.

Ref	Project Details	Key Dates	HH Mgt Strategy Outcomes	Corporate Plan Aims	Notes on progress (October 2021 updates in <i>italic text</i> )
	applications to ensure that the Heath is protected.			Shape outstanding environments.	
HH27	<b>Climate Action Strategy</b> Open Spaces seek opportunities to enhance carbon capture while enhancing biodiversity and resilience. These actions will contribute towards the City Corporation achieving Net 0 by 2027 in scope 1 & 2 emissions	2027 Net 0 scope 1 & 2 2040 Net 0 Scope 1, 2 and 3.	Outcome A, Priority 1.  Outcome B, Priority 4.  Outcome D, Priority 10.	Contribute to a flourishing Society.  Shape outstanding environments.	Strategy adopted October 2020.  Now in first phase of delivery.  Quarterly reporting to HHCC and HHHWQPC.
HH28	<b>Contactless Payment for access to Toilets</b> Undertake a Feasibility Study to inform the possible introduction of a charge at some toilet facilities to pay towards cleaning and maintenance.	2022/23.	Outcome D, Priority 10.	Shape outstanding environments.	This project is not being prioritised.

This page is intentionally left blank

# High Level Asset Management Plan – Hampstead Heath 2021-2023

## Asset Assessment – RETAIN

### Ambition

Effective management of the built assets forming part of Hampstead Heath is integral to achieving the following: -

- Our vision of a vibrant and thriving City, supporting a diverse and sustainable London within a globally successful UK.
- Meeting statutory obligations and charitable objectives to preserve our Open Spaces and to provide for the recreation and enjoyment of the public.
- Assets that are high quality and support the Vision for Hampstead Heath to be an inclusive and welcoming Open Space that enhances visitors' quality of life.
- Buildings and facilities that are fit for purpose, energy efficient, support effective delivery of services and optimise efficiencies and value for money.

### Finance

City Cash

**Purpose** - to ensure that asset management of buildings at Hampstead Heath is joined up and inclusive, bringing together the strategic vision of the City Corporation, as outlined in the Corporate Plan 2018-2023.

**Alignment** - with Departmental objectives as set out in the Open Spaces Business Plan 2021/22 and the Hampstead Heath

### Key Priorities for Hampstead Heath Asset Management

The Hampstead Heath 2019-2021 Asset Management Plan (AMP) has been reviewed to inform the key priorities for the 2021-2023 AMP. These key priority work streams meet the Division's strategic priorities as set out in the Divisional Plan 2021-2024. This is a working document and will be updated to reflect the actions emerging from Officers quarterly review meetings.

The High-Level AMP will seek opportunities in relation to the City of London Corporation Climate Action Strategy to enhance carbon capture while enhancing biodiversity and resilience. These actions will contribute towards the City Corporation achieving Net 0 by 2027 in scope 1 & 2 emissions.

Governance is provided by the Hampstead Heath Senior Management Team which is chaired by the Superintendent of Hampstead Heath.

#### 1. Review Staff office and welfare accommodation (HH16)

Undertake a strategic review of the built assets across the Parliament Hill Fields area of the Heath including the Lido, Hive, Peggy Jay Centre and Adventure Clubhouse, Athletics Track, Bowls and Croquet green, Tennis Courts,

# High Level Asset Management Plan – Hampstead Heath 2021-2023

Divisional Plan  
(reviewed annually).

**Strategy** – incorporates the adopted Corporate Property Asset Management Strategy 2020/25 and the Hampstead Heath Management Strategy 2018-2028.

**Performance** – Measures to be developed in collaboration with stakeholders over the life of the plan.

**Review** – progress be reviewed by between Business Plan Stakeholders, Asset Managers and Property Facilities Managers at quarterly meetings.

**Governance** - The Superintendent of Hampstead Heath is responsible for oversight of this Plan and for

Cafés and Toilet Facilities, Offices and associated buildings at the Parliament Hill Staff Yard. The review will consider the most appropriate use of the existing facilities to achieve the following objectives:

- Relocation of Heathfield House office accommodation to achieve the objectives of the City of London Corporation Operational Property Review. This also provides the opportunity to recognise the new and successful ways of working which have emerged over the course of the pandemic. We will be incorporating these into our return to the workplace and to support our new Target Operating Model to ensure we make use of the opportunities provided by a new, more flexible, working style.
- To ensure both staff and volunteer office and welfare facilities are integrated and fit for purpose.
- To provide a visitor engagement hub offering information, Heath related retail, which is accessible and welcoming in order to engage proactively and encourage foster collective care for the Heath.
- Provide fit for purpose learning facilities to enable the Open Spaces Department Learning Team to consolidate the learning provision.
- Provide accessible and fit for purpose leisure and sports facilities to encourage participation in both formal and informal recreation to promote wellbeing, healthy and active lifestyles.
- Ensure all built assets are fully utilised and where possible generate funding to support the Hampstead Heath Charity.
- To provide electric vehicle charging network to support compliance with ULEZ (HH6).

## **2. Delivery of Swimming Capital Project (HH14) - safety, accessibility and security works across the Bathing Ponds and Parliament Hill Fields Lido**

- Gateway 2 approved (May 2021) and Gateway 3 to be progressed through the Swimming Project Board.

## **3. Develop a Capital bid for the Athletics Track (HH15) - to reconstruct the track surface and associated infrastructure to achieve TrackMark accreditation**

- Set up a Project Board with the City Surveyors.
- Update Gateway 1 to inform Capital Bid in August 2021.
- Seek external funding to support Capital Bid.

## **4. Conserve and maintain Heritage assets (to undertake repairs and restoration of the Pergola).**

- City Surveyor to complete Gateway 1 to inform Capital Bid in August 2021.



# High Level Asset Management Plan – Hampstead Heath 2021-2023

seeking the approval of the Hampstead Heath, Highgate Wood and Queen's Park Committee, following consultation with the Hampstead Heath Consultative Committee. Performance against objectives reported into Corporate Asset Sub Committee annually by the City Surveyor's Department.

## Contacts

Superintendent - Bob Warne, Ext 3322.  
Corporate Asset Manager - Warren Back, Ext 3457.  
Property Facilities Manager - Liam Boyle, Ext 3107

- Seek external funding to support Capital Bid.

## 5. Golders Hill Park – Zoo & Butterfly House (HH13)

- Prepare project brief and tender documents for an Options Appraisal.
- Commission an options appraisal to inform discussions with HHCC and HHMC regarding the long term-term sustainability of the Zoo and Butterfly House.

## 6. Cafés (HH19)

- Retender with 10-year leases to seek additional investment.
- Tender the Heath Extension Kiosk.
- Develop proposals for additional fixed and mobile catering.

## 7. Ensure the Heath is sustainable, inclusive and welcoming to a diverse range of visitors.

- Develop Annual Work Programme Projects to enhance carbon capture while enhancing biodiversity and resilience. These actions are critical to contribute towards the City Corporations achieving Net 0 by 2027 in scope 1& 2 emissions (HH27).
- Savernake Bridge (HH10) & Nassington Road - Heath gateway access and landscape improvements, in association with Heath Hands and the London Borough of Camden.
- Cycle parking (HH11) - Install additional cycle parking at entrances and facilities.
- Accessible Car Park at Golders Hill Park (HH23) - Undertake a tendering process to appoint a Consultant to develop options which facilitate safe weekend and Bank Holiday opening of the Car Park.
- Accessible walking routes & shared route pathways to be prioritised within the CWP.
- Playgrounds (HH9) - Implement improvements in line with the Play Principles to improve accessibility and provide natural play.

## Cyclical Works Programme – facilities maintenance.

- The Cyclical Works Programme for Hampstead Heath for 2021/22 is concentrated on Health & Safety works at the Swimming facilities. 2022/23 CWP is being scoped and bid lid is being finalised.

# High Level Asset Management Plan – Hampstead Heath 2021-2023

- CWP funding has moved to a 1-year programme. Further priority for paths and drainage works required. Due to CWP programme changes, greater emphasis will be placed on Capital Project funding.

## Business Plan Links

**City Surveyor's Business Plan 2020-2025** Strategic Property Asset Management – A strategy for Hampstead Heath that aligns Corporate and Business Planning to fully optimise its operational use.

- Property Management – Ensuring buildings and facilities that are fit for purpose, energy efficient, meeting service needs and delivering value for money.
- Income Generation – Seek to generate relevant and appropriate opportunities for income generation through events and third-party leasing opportunities.

## Open Spaces Department Business Plan 2021/22

Top level objectives:

- Open spaces and historic sites are thriving and accessible.
- Open spaces enrich people's lives.
- Business practices are responsible and sustainable.

## Hampstead Heath Management Strategy 2018-2028

Outcomes summary:

- The Heath is maintained as a flourishing green space and historic landscape by balancing visitor activities and conservation of the natural, built and heritage values.
- Improved quality of life for Heath users, facilitated by improved physical health and improved mental health and well-being.
- Improved social inclusion through provision of spaces, facilities and activities that are accessible to more diverse users.
- Responsible management is achieved through a culture of shared custodianship and collaboration.

**Our overriding Corporate Strategy is to manage the City's operational assets effectively, efficiently and sustainably to deliver strategic priorities and service needs.**

# COMMUNICATIONS - PROJECTS

Ref	Location	Details of Proposed Work: April 2021 - March 2022	Timing of work	Who is Responsible	Link to 2018 Mgmt. Strategy	RAG Status (Oct 2021)
COM-PR1	Communication Plan	Lead on development of Communication Plans for key projects including 150th Anniversary of the 1871 Act (HH5), Professional Dog Walkers Licencing Scheme, playground improvements (HH9), resurfacing of East Heath car park (HH8)	2021	Comms Officer	Outcomes B, C & D	
COM-PR2	Management Strategy	Draft an Annual Update which charts the progress of the 2018 - 2028 Management Strategy for Hampstead Heath.	2021	Comms Officer	Outcomes A, B, C & D	
COM-PR3	Web updates	Review and ensure content of City Corporation website is correct and up-to-date	Ongoing	Comms Officer	Outcomes B, C & D	
COM-PR4	Waste and recycling improvement project	Create communications campaign to support the improvements made to waste and recycling on Hampstead Heath.	2021	Comms Officer	Outcomes B, C & D	
COM-PR5	Signage	Replacement of the Heath's main signs (and maps). Work in partnership with the H&HS on new biodiversity interpretation boards linked to the 150th Anniversary of the Heath Act (HH5).	Ongoing	Comms Officer	Outcomes B, C & D	
COM-PR6	Swimming Project	Continue to provide communications support related to the Swimming Review and administer the swimming season tickets (HH13)	2021	Comms Officer	Outcomes B, C & D	
COM-PR7	Cycling signage	Update cycling signage and leaflets to facilitate compliance with Heath bylaws and promote responsible cycling. (HH11)	2021	Comms Officer	Outcomes B, C & D	

GREEN: Task is complete / AMBER: Task in Progress / RED: Task has not yet started

# CONSERVATION & ECOLOGY - PROJECTS

Ref	Location	Details of Proposed Work: April 2021 - March 2022	Timing of work	Who is Responsible	Link to 2018 Mgmt. Strategy	RAG Status (Oct 2021)
CE-PR 1	Hampstead Heath	Assessment of and reinstatement works related to additional ground damage adjacent to main pathways on Highgate and Hampstead chains and the wider Heath caused by increased use/visitor numbers during the Covid pandemic. Areas to be prioritised according to location, level of damage and risk to public.	2021/22	Conservation Supervisor, Trees & Conservation Manager	Outcomes A & B	
CE-PR 2	Hampstead Heath	Reinstatement works to Covid related ground damage to dams, spillways and ponds margins. Areas to be prioritised according to location, level of damage and risk to public.	2021/22	Conservation Supervisor, Trees & Conservation Manager	Outcomes A & B	
CE-PR 3	Hampstead Heath	Tree planting on Parliament Hill Broad Walk to contribute to the City of London's Climate Action Strategy.	2021/22	Conservation Supervisor, Trees & Conservation Manager	Outcomes A & B	
CE-PR 4	Hampstead Heath	Pedestrian and cycle working group: Programme of shared use paths improvements/refurbishment to be rolled out 2021, following recommendation in LUCs 2018 Condition survey.	2021/22	Conservation Supervisor, Trees & Conservation Manager	Outcomes A & B	
CE-PR 5	Hampstead Heath	Undertake phased implementation of the recommendations within the Ponds and Wetlands Plan.	2019/22	Ecology Team, Trees & Conservation Manager, City Surveyors	Outcomes A & B	
CE-PR 6	Hampstead Heath	Post Card Project: Volunteer assisted project with Ecologist creating data base of interactive old and new postcard views for Hampstead Heath.	2019/22	Ecology Team, Trees & Conservation Manager	Outcomes D	

GREEN: Task is complete / AMBER: Task in Progress / RED: Task has not yet started

### HEATH CONSTABULARY - PROJECTS

Ref	Location	Details of Proposed Work: April 2021 - March 2022	Timing of work	Who is Responsible	Link to 2018 Mgmt. Strategy	RAG Status (Oct 2021)
HHC-PR 1	Hampstead Heath	Undertake a feasibility study of inform the introduction of Vehicle on-board cameras.	Apr-21	Sgts	Outcomes B, C & D	
HHC-PR 2	Hampstead Heath	Develop an Enforcement Policy following the introduction of the City of London (Open Spaces) Act 2018. Develop procedures to implement Fixed Penalty Notices for the enforcement of Byelaws.	September 2021 to April 22	Sgts	Outcomes B, C & D	
HHC-PR 3	Hampstead Heath	Review radio communications across the Division, investigate options for upgrading the current system to reflect advancement in technology with expected capital costs.	April 2021 to October 2021	Sgts	Outcomes A, B, C & D	
HHC-PR 4	Hampstead Heath	Scope the introduction of a remote reporting module / tablet which will allow Constabulary Officers to record incidents and occurrences whilst away from a fixed office.	April 2021 to December 2021	Sgts	Outcomes B, C & D	
HHC-PR 5	Hampstead Heath	Review of partnership working with outside partner agencies to work towards more formalised information sharing and partnership working.	April 2021 to December 2021	Sgts	Outcomes B, C & D	
HHC-PR 6	Hampstead Heath	Develop a Constabulary engagement programme with schools, community groups and stakeholders, promoting the positive role of the Constabulary in the local community.	April 2021 to December 2021	Sgts	Outcomes B, C & D	

GREEN: Task is complete / AMBER: Task in Progress / RED: Task has not yet started

**GOLDERS HILL PARK - PROJECTS**

Ref	Location	Details of Proposed Work: April 2021 - March 2022	Timing of work	Who is Responsible	Link to 2018 Mgmt. Strategy	RAG Status (Oct 2021)
GHP-PR1	COVID-19 Impact Recovery Programme	Undertake a programme of grassland restoration works, focused on the following primary areas: Children's play area; Golders Hill Park girl statue lawn; the cafe lawn; path edges; sports areas.	Spring 2021 and again in Autumn 2021	Site Supervisor	Outcomes A, B & D	
GHP-PR2	Waste & Recycling	Installation of timber bin enclosures. Glass recycling bin locations to be piloted. Review the green waste recycling arrangements.	Spring/ Summer 2021	Site Supervisor	Outcomes A, B & D	
GHP-PR3	Marginal Planting at the Water Garden, Swan Pond and Lilly Pond	Undertake aquatic planting scheme to increase bio-diversity.	Spring 2021 or Autumn 2021 TBC	Site Supervisor	Outcomes A & B	
GHP-PR4	Accessible Car Park	Re-tender to seek design options to facilitate safe access arrangements for weekend and bank holiday opening of the Accessible Car Park, during park opening hours.	Spring/ Summer 2021	Park Manager	Outcomes A, C & D	
GHP-PR5	GH / H Ext / Pergola - Memorial Benches	Implement annual bench maintenance schedule with a target of 15 renewals to address benches reaching end of life. Liaise with Support Services for contacting of sponsors.	March to November 2021	Site Supervisor	Outcomes B, C & D	
GHP-PR6	Hill Garden Pergola	Plan and implement new planting plan for identified areas (section from bottom of stairs to the Bothy and phase three of Winter Boarder) within the Hill Garden.	March to November 2021	Site Supervisor	Outcomes A & B	
GHP-PR7	GHP - Pinetum	Continue with third phase planting plan for Pinetum.	Throughout the Year	Site Supervisor	Outcomes A & B	
GHP-PR8	Stumpery	Continuation of phase three of the Stumpery, subject to securing additional stumps.	Spring 2021 and Autumn 2021	Site Supervisor	Outcomes A & B	

GREEN: Task is complete / AMBER: Task in Progress / RED: Task has not yet started

# PARLIAMENT HILL - PROJECTS

Ref	Location	Details of Proposed Work: April 2021 - March 2022	Timing of work	Who is Responsible	Link to 2018 Mgmt. Strategy	RAG Status (Oct 2021)
PHF-PR 1	COVID-19 Impact Recovery Programme	Undertake a programme of grassland restoration works in high impact areas.	Spring 2021	Site Supervisor	Outcomes A, B & D	
PHF-PR 2	Nassington Road, Savernake Road Bridge & Hive	Complete the landscape improvement works as agreed by Committee to this important gateway onto Hampstead Heath.	Winter 2021 to Spring 2022	Site Supervisor	Outcome A, C & D	
PHF-PR 3	PHF - Adventure Playground	Assist in landscaping aspect of development project for Adventure Playground. Undertake planting of trees, shrubs and vegetation in line with landscape plan.	Winter 2021- Spring 2022	Site Supervisor, Education Supervisor	Outcome A, B, C & D	
PHF-PR 4	Memorial Benches	Implement target of 15 renewals to address benches reaching end of life. Tag and monitor 15 further bench sites for renewal in 2021-2022.	Throughout the year	Site Supervisor	Outcomes B, C & D	
PHF-PR 5	Cycling	Repair cycle parking area at the Lido through levelling and installing grass reinforcement panels.	Spring 2021	Site Supervisor	Outcome A	
PHF-PR 6	PH Athletics Track	Prepare and submit the Capital Project to reconstruct the Parliament Hill Athletics Track.	Autumn 2021	Operational Services Manager	Outcome B, C & D	
PHF-PR 7	Trackmark Accreditation	Realignment of floodlights to give an even distribution of light on track and infield.	Spring 2021	Site Supervisor	Outcome D	

GREEN: Task is complete / AMBER: Task in Progress / RED: Task has not yet started

# HEATH RANGER TEAM - PROJECTS

Ref	Location	Details of Proposed Work: April 2021 - March 2022	Timing of work	Who is Responsible	Link to 2018 Mgmt. Strategy	RAG Status (Oct 2021)
HHR-PR 1	COVID-19 Impact Recovery Programme	Undertake a programme of grassland restoration works with focus on high impact areas.	Spring - Summer 2021	Site Supervisor	Outcomes A, B & D	
HHR-PR 2	East Heath Car Park	Assist City Surveyors Department with the management and control of contractors to implement drainage and car park surface works to agreed design. Attend contract meetings and manage stakeholder communications.	Spring - early summer 2021	Site Supervisor	Outcome B, C & D	
HHR-PR 3	East Heath play Area	Implement and oversee agreed design for improvement of existing equipment and introduction of natural play.	Spring-Autumn 2021	Site Supervisor	Outcome B & C	
HHR-PR 4	Vale of Health Play Area	Implement and oversee agreed design for improvement of existing equipment and introduction of natural play.	Spring-Autumn 2021	Site Supervisor	Outcomes B & C	
HHR-PR5	Heath Extension Play Area	Undertake landscaping works to support re-design of the Play Area, following agreement of a new design in consultation with stakeholders, and funding being identified.	Autumn 2021	Site Supervisor	Outcomes B & C	
HHR-PR6	Cycling	Sandy Heath Patrols, install cycle parking East Heath Car Park, install children's scooter parking racks at the playgrounds, install and maintain way markers for the shared use paths across the Heath.	Throughout the Year	Site Supervisor	Outcomes A, B & C	
HHR-PR7	Memorial Bench Project	Liaise with Support Services to implement bench sponsorship policy to include renewals, waiting list provision, repairs and maintenance.	Throughout the Year	Site Supervisor	Outcomes B, C & D	
HHR-PR8	Forest Schools	Monitoring Forest School activity across Hampstead Heath.	Throughout the Year	Site Supervisor	Outcomes B & C	
HHR-PR9	Waste and Recycling	Review the provision of dog waste bins on West Heath.	Throughout the Year	Site Supervisor	Outcomes B, C & D	
HHR-PR10	All excavation works	Any extensive excavation work, archaeological monitoring and advice sought prior to breaking ground.	Throughout the Year	Site Supervisor	Outcome A & D	

GREEN: Task is complete / AMBER: Task in Progress / RED: Task has not yet started



### SWIMMING - PROJECTS

Ref	Location	Details of Proposed Work: April 2021 - March 2022	Timing of work	Who is Responsible	Link to 2018 Mgmt. Strategy	RAG Status (Oct 2021)
SW-PR 1	Bathing Ponds and Lido	Progress the Bathing Ponds and Lido Capital Project to improve Safety, Access and Security through the Corporate Capital Project Gateway process. Progress the Project to RIBA Stage 2 (Concept and Options) and City of London Corporation Gateway 3/4.	Phased project from 2021	Swimming Facilities Supervisor / Leisure & Events Manager / Superintendent	Outcomes A, B, C & D	
SW-PR 2	Lido Security Lighting	Install external security lighting at the rear of the Lido.	Mar-22	Constabulary & Queens Park Manager / Swimming facilities Supervisor / Leisure & Events Manager / City Surveyors	Outcomes C	
SW-PR 3	Lido and Paddling Pool maintenance	Undertake maintenance and repair of the Parliament Hill Paddling Pools.	Ongoing 2021	Swimming Facilities Supervisor / City Surveyors	Outcomes B & D	
SW-PR 4	Health Connections	Map facilities and opportunities that are available to establish a framework to support the healthy growth of our communities and particularly different groups who experience more exclusion or disadvantage than others.	Ongoing 2021	Leisure & Events Manager / Superintendent	Outcomes A, B, C & D	
SW-PR5	User Surveys	Undertake regular user surveys.	Ongoing 2021	Communications Officer	Outcomes D	
SW-PR6	Annual Report	Prepare the Swimming Annual Review Report 2021-22.	Mar-22	Communications Officer	Outcomes D	

GREEN: Task is complete / AMBER: Task in Progress / RED: Task has not yet started

### TREE TEAM - PROJECTS

Ref	Location	Details of Proposed Work: April 2021 - March 2022	Timing of work	Who is Responsible	Link to 2018 Mgmt. Strategy	RAG Status (Oct 2021)
TT-PR 1	Veteran Tree Management	To promote and develop the continuing management of the Veteran and Ancient trees on Hampstead Heath, Highgate Wood and Queen's Park. Re survey of veteran trees across Hampstead Heath is 90% completed with 625 trees registered. Next priority is to draft Management Plan. Continue work to priorities works to stabilise and conserve veteran trees according to condition. Continue to develop Tree Team's specialism in veteran tree management and conservation. Also carry out a programme of veteran tree protection using timber fencing and carry out soil compaction testing and soil testing as a response to increasing visitor pressures heightened by Covid.	Year round	Tree Management Officer & Trees and Conservation Manager	Outcome A	
TT-PR 2	Views and Vistas	Identify views to retain and those to be abandoned. Ref HH Management Strategy: Outcome A, Priority 2, Commitment 7. Currently working with Heath and Hampstead Society on prioritising the 16 identified view sites and have agreed that a significant number of these are no longer recoverable. Embarking on a UCL MSc project in January where views will be a study topic.	Year round	Tree Management Officer & Trees and Conservation Manager	Outcome A	
TT-PR 3	OPM IPM	Pilot project in HH Bird Sanctuary to identify presence of OPM Parasitoid, Carcelia iliaca. Major success with this collaborative project with H&HS and Heath Hands with 500+ flies emerging from 3 test cages left in HH Bird Sanctuary. Plan is to expand the area of further captive breeding sites and try and measure level of parasitism in each nest.	April to June	Tree Management Officer & Trees and Conservation Manager	Outcome A & D	

GREEN: Task is complete / AMBER: Task in Progress / RED: Task has not yet started

<b>Committee(s):</b> Hampstead Heath Consultative Committee	<b>Date:</b> 01/11/2021
<b>Subject:</b> Review of the 2021 Events Programme & Provisional Events planned for the 2022 Programme	<b>Public</b>
Which outcomes in the City Corporation's Corporate Plan does this proposal aim to impact directly?	<b>1, 2, 3, 4, 5, 11 &amp; 12</b>
Does this proposal require extra revenue and/or capital spending?	No
If so, how much?	
What is the source of Funding?	
Has this Funding Source been agreed with the Chamberlain's Department?	
<b>Report of:</b> Executive Director, Environment	<b>For Discussion</b>
<b>Report author:</b> Paul Maskell, Leisure & Events Manager	

## Summary

This report details the significant impacts Covid-19 has had on the 2021 Hampstead Heath Events Programme, and sets out the provisional 2022 events schedule (appendix 1).

## Recommendation

It is recommended that Members:

- Provide feedback on the proposed 2022 Events Programme (appendix 1).

## Main Report

### Background

1. The Hampstead Heath Site Specific Events Policy (Part 2), which was approved in September 2018, sets out the framework for making decisions about events at Hampstead Heath.

### Current Position

2. Due to the Covid-19 lockdowns and social distancing measures, a number of events early in the year had to be cancelled including:
  - The English National Cross Country Championships (6 March 2021)
  - Affordable Art Fair (AAF 28 April to 2 May 2021)
  - Night of the 10k (19 May 2021)
  - Cancer UK's Race for life (15 June 2021)
  - Give it a go (July 11 2021)
  - Summer music programme on the bandstand (June to September 2021)

3. From 19 July 2021, in-line with the Government's Roadmap out of Lockdown, events were able to resume on the Heath. To ensure visitor safety, the Leisure and Events Manager has worked closely with event organisers to enable events to proceed in line with government guidance.
4. Due to the Covid-19 Pandemic, the Officer Events Group (OEG) have taken, and will continue with a practical and informed approach in relation to considering event applications, being mindful that the current situation still lacks certainty. Therefore, it is very difficult for event organisers to make applications within the usual timeframes, especially in relation to larger events, or those which involve mass participation.
5. The OEG will continue to support smaller COVID Secure cultural and community events which may arise at short notice but are compliant with the latest Government Guidance, and the Heaths celebration of #150

### **The 2021 Events Programme**

6. Race for Life have been holding events on the Heath for over 30 years. This years event has re-scheduled a number of times before taking place on 21 August 2021.  
The event manager provided the following feedback "We had around 200 participants taking part in the race and helping us to raise over £20,000 which is amazing! This money is going to help to fund life-saving research into the causes, prevention, diagnosis and treatment of all types of cancer. The low numbers were frustrating, but race for life are committed to carrying on their 30-year legacy of holding the event on the Heath and with a return to some kind of normality, we hope that numbers will be more substantial for 2022."
7. Zippos Circus hosted performances on the Heath from 12 -18 July 2021. Performances were better attended this year, however, numbers were still down on pre-covid performance attendance levels.
8. Traditional Fairs took place over the Whitsun (9 day fair) and August Bank Holiday (3 day fair) weekends. Unfortunately the longer Easter fair, linked to the proposals for a secondary event managed by the AAF, was not able to go ahead due to covid restrictions in place at the time.
9. 2021 marks the 150th anniversary of the passing of the Hampstead Heath Act 1871. In celebration, a range of celebrations and events have taken place throughout 2021. The #Heath150 outdoor exhibition was hosted at East Heath between 25 June - 8 August 2021. The display told the story of how Hampstead Heath was saved and is protected through to today. This exhibition proved popular with visitors and was the focus of several community events, such as the Highgate Festival 2021 and Hampstead Summer Festival, with live interpretation events, engaging with audiences across the Heath.
10. The Heath's Leisure & Event's Manager worked in partnership with the Heath & Hampstead Society to deliver two events; a Kite Flying Festival at Parliament Hill on 27 June attended by 600 people throughout the day, and a Community

Concert on 5 September at the Parliament Hill Bandstand. The Concert was called 'Natural Aspect' and attracted over 800 people to watch John Etheridge, Vimala Rowe, Cosmo Sheldrake and the Beaky band

11. Heath Hands hosted a Community event at the Parliament Hill Bandstand on 27 June which was well attended, with approximately 600 people attending.
12. The 21st Hampstead Heath Duathlon took place on 5 September 2021. The event is run in partnership with the Hampstead Rugby Football Club. Participation numbers were capped at 158 (50 less than number of participants at the 2019 event) and event pre-registration took place on the Saturday to avoid large crowds gathering. Lane swimming was introduced at the Lido to reduce crowding of participants in the water. The event was a great success, with TRI London 1 winning the team event. The Men's event winner finished with a time of 33m 16s, and the Women's event winner finished with a time of 34m 51s.
13. Hideaway Cinema and the Hampstead Heath Film Festival took place between 8 - 12 September. To celebrate the #Heath150, a screening of Tinker Taylor Soldier Spy was hosted. In partnership with Heath & Hampstead Society a Q&A with Nick Harkaway, John Le Carre's son, and Lord Melvin Bragg took place before the screening, which proved to be a great success.
14. Run for your Life is one of our most popular fun runs on Hampstead Heath and is run in partnership with the Armoury, Jubilee Hall Trust. A total of 588 runners took place in the 2021 event.
15. A total of 22 Weddings and Civil Ceremonies took place at Hampstead Heath during 2021. The Rotunda and Belvedere locations were not used, and ceremonies were held primarily at the Hill Garden due to Covid. As part of the Government's trial adjustment to the criteria for wedding venues (which commenced on 1 July 2021, and will be in place until 31 March 2022), two additional locations within the Hill Garden and Pergola were approved. This enables weddings and civil ceremonies to take place totally outdoors. This trial was introduced to assist licensed venues with managing ceremonies safely. The locations which are being trialled are in the Hill Garden, adjacent to the Pond, where six of the ceremonies took place, and on the Pergola, parallel to Inverforth House, where two ceremonies took place.

#### Upcoming events (2021)

16. The London Youth Games is due to take place on 16 November 2021. The Leisure and Events Manager is currently in talks with the event organisers, and we are hopeful that this event will go ahead.
17. From 27 November 2021 - 2 January 2022 East Heath will play host to the first Hampstead Heath Christmas Fayre. The event will have a staggered start beginning with a traditional Christmas tree market from 27 November. From 1 December small-scale fairground rides, Christmas style chalets selling food and refreshments and ancillary goods will be added. Christmas tree sales will commence from 10.00am (daily) and the market and fair from 11.00am (daily). The fayre will close by 7.00pm (daily) and noise levels will be kept to a minimum.

18. The Leisure & Events Manager is making arrangements for the 2021 Christmas day swim and we are hopeful that this event will go ahead.

#### Cancelled & Postponed Events (2021)

19. Affordable Art Fair (AAF), Hampstead was due to take place between 28 April - 5 May 2021, with a second event planned, following on from the Art Fair. However, in early February, the event organisers cancelled the 2021 fair due to continued uncertainty around Covid-19.
20. Highgate Harriers' 'Night of 10,000m PB's' was cancelled in early April 2021. The event had been due to take place on 19 May 2021.
21. The summer 2021 music programme was also cancelled. 23 band performances had been scheduled to take place at Parliament Hill and Golders Hill Park during June-August 2021. The Leisure and Events Manager hopes to launch a new summer music programme in June 2022 which will include a full programme of Bandstand concerts and 3 Friday evening concerts.
22. Circus Berlin were due to perform on the Heath between 22- 29 September. Unfortunately, due to challenging economic conditions and an outbreak of COVID 19 within the performers, the circus cancelled their performance on Hampstead Heath.
23. Throughout 2020 and early 2021 the Leisure & Events Manager had been working with our community partners to plan and prepare for Give it a Go! 2021 event. In early June, after discussions with our partners the decision was taken to cancel the 2021 event, which had been due to take place on 4 July. The Leisure and Events Manager will make tentative plans for a July 2022 event.

#### **Proposed 2022 Events Programme**

24. The proposed 2022 Events Programme is set out in appendix 1. The Leisure & Events Manager would like to draw Members attention to the following events, set out below.
25. The English National Cross-Country Championships were due to take place on 6 March 2021. After some contemplation the organising Committee decided to postpone the 2021 event to hold the 2022 English National Cross-Country Championships on the Heath on the 26 February 2022. This has necessitated the Southern Counties Cross Country, which was scheduled to be held on the Heath, moving to an alternative location for 2021
26. The AAF are keen to go ahead with a 2022 Hampstead Heath Affordable Art Fair, and to host a second event in 2022, following on from the Art Fair. They are still working on details and updates will be provided in due course.
27. Linked to the proposals for a secondary event managed by the AAF, the Leisure & Events Manager has discussed with Members the proposal for the Showmen's Guild to host a longer Easter Fair, to replace the Whitsun fair. Therefore it is proposed that the 2022 Easter Fair will take place between 9-12 April and 15-18 April 2022.

28. Highgate Harriers have made a 2022 application for the Night of the 10,000 PB's event to take place on 14 May 2022. The event, as agreed with British Athletics, is based on hosting under the assumption of 'normal' non- covid restrictions. The event will include the British Championships and Team GB trials for the World Championships. President of the IAAF, will attend the event and incorporate it as an official ceremony granting Hampstead Heath and the English National Cross Country their World Athletics Heritage Plaque.
29. As part of the #Heath150 legacy the Leisure & Events Manager is working in partnership with the Heath & Hampstead society to repeat the Kite flying festival (26 June 2022) and Natural Aspect concert (4 September 2022).
30. It is proposed to bring back the Hampstead Heath Film Festival between 6-11 September 2022.

## **Corporate & Strategic Implications**

31. The Events Programme directly supports the Hampstead Heath Management Strategy 2018-2028 Strategic Outcomes A: The Heath is maintained as a flourishing green space and historic landscape, B: Improved quality of life for Heath visitors, C: The Heath is inclusive and welcoming to a diverse range of visitors and D: Greater number of and diversity of People taking care of the Heath.
32. The provision of the events programme also meets the three objectives and outcomes set out in the Open Spaces Business Plan 2020-21 (a) Open spaces and historic sites are thriving and accessible, (b) Spaces enrich people's lives and (c) Business practices are responsible and sustainable.
33. The events programme contributes towards the achievement of the three aims set out in the City of London Corporate Plan 2018-23. Contribute to a flourishing society (1-4), Support a thriving economy (5) and Shape outstanding environments (9-12).

## **Implications**

### Financial

34. The Events Policy details the framework for event cost recovery. The associated charges for holding events are set out in the annual Fees and Charges which are review and approved by Members on an annual basis.
35. As a direct result of the Covid-19 pandemic revenue from events has been severely curtailed, which has placed additional pressure on the Hampstead Heath Local Risk Budget.

## **Conclusion**

36. The remainder of the 2021 Events Programme and the proposed 2022 Events Programme are subject to Government Guidance and Policy regarding the on-going Covid-19 pandemic. The Leisure & Events Manager is in regular contact with the event organisers and is confident that if Covid-19 measures continue to

ease the Heath can return to hosting a wide range of events that promote sport, health and well-being, whilst contributing to achieving the Outcomes of the Hampstead Heath Management Strategy 2018-2028.

## **Appendices**

- Appendix 1 – Proposed 2022 Events Programme.

## **Contact**

Paul Maskell

Leisure and Events Manager, Environment Department

T: 020 7332 3772

E: [paul.maskell@cityoflondon.gov.uk](mailto:paul.maskell@cityoflondon.gov.uk)



Event	Event Date	Event Duration	Event opening hours	Set-up & Strike	Event Details	Event Scale
English National Championships	26 February 2022	1 day	06:00 – 18:00	1 set up day 1 strike 26-27 February	National Competition With several age groups including young athletes. Infrastructure includes several Marquees and a VIP caravan serving food and hot drinks.	Major
Showman's Guild Easter Fair	9-18 April 2022  (not open 6-7 April)	9 days	Funfair opens 12 noon – 21:30 (except Sundays)	2 days set up days (7 -8 April)  1 strike days (18 April)	Traditional Family Funfair at the Lower Fairground site.  Approx. 15-20 funfair operators will be taking part.	Major
Affordable Art Fair	4-8 May 2022  (Private view 4 May 2022)	5 days	<p>Wednesday 4 May 17:30 – 21:30</p> <p>Thursday 5 May 11:00 – 21:00</p> <p>Friday 6 May 11:00 – 19:00</p> <p>Saturday 7 May 11:00 – 18:00</p> <p>Sunday 8 May 11:00 – 18:00</p>	<p>15 set up days (21 April – 5 May).</p> <p>6 strike days (10-15 May)</p>	<p>Art Fair at the Fairground site. Use of East Heath Car Park and Jack Straws Castle Car Park for visitor and exhibitor parking.</p> <p>The estimated number of participants over the course of the fair is 15,000 with 110 exhibiting galleries are anticipated.</p> <p>Structures: main tent 4250m2, cafe 650m2, entrance 400m2. These structures are built on a scaffold frame to provide a strong, flat base. Internally there are approx. 110 individual booths built from painted timber panels.</p> <p>The 2022 Hampstead AAF Charity Beneficiary is to be decide</p> <p>DJ on Wednesday and Thursday evening, recorded music during fair, possible live acoustic on Wednesday evening – all within the tent structures.</p> <p>An application from the AAF for a second event utilising the Art Fair infrastructure is anticipated.</p>	Major

Highgate Harriers Night of 10,000m PB's	14 May 2022	1 day	12noon – 22:30	<p>1 set up day (13 May)</p> <p>1 strike day (15 May)</p>	<p>460 participants (including 100 children) are expected. 5,000 spectators are anticipated.</p> <p>The event comprises nine 10,000m events with a circus atmosphere and spectators viewing from track. The championship races include the World 10,000 meters trial.</p> <p>The Championships races also include the British Championships, and this year will be open to international athletes looking for high quality performances and times.</p> <p>A DJ will be on the back straight of the track with speakers facing away from residential area and we also use a 4-piece acoustic band on the home straight of the track.</p> <p>Portable Toilets will be hired for spectator use.</p> <p>The 2022 event will use the same layout as 2019, with temporary structures consisting of three 30m x 9m marquees (two on the track and one on the grass just beyond the Banjo area), finish line gantry and we will once again use the temporary pedestrian bridge.</p> <p>First aid and waste collection arrangements are in place.</p>	Major
Heart walk	22 May 2022	1 day	11:00 – 15:30	Same day arrive 9.30 set up strike finished by 16.30	This is a one-day event with 2x Marquees and signed route for 5k and 10k. Th event is a charity walk in aid of British heart foundation estimated 1,000 participants	Medium
Race for Life	18 June 2022	1 day		Set up and Strike will take place on the day of the event.	<p>Charity Fun Run in aid of Cancer Research.</p> <p>Estimated 1,500 participant (1,200 adults, 300 children).</p> <p>The event organiser will provide portable toilets and hand sanitiser stations and will undertake cleaning of the toilets throughout the event. The portable toilets will be removed after the event.</p>	Medium

Young Music Makers Bandstand concert	26 June 2022	1 day	15:00 – 17:00	Set up and Strike on the same day	As part of the Hampstead Heath Bandstand Music programme bands begin on the 18 <sup>th</sup> of June and finish on the 18 <sup>th</sup> of August. As part of the programme the young music makers will be providing a two-hour set of new music. Estimated Participants 800	Medium
Legacy #150 kite flying	26 June 2022	1 day	13:30 – 16:30	Set up and Strike on the same day	In celebration of HH #150 we are partnering with the Heath and Hampstead society to produce the kite flying event on Parliament Hill Estimated Participants (800 adults, 400 children)	Medium
Legacy #150 Natural aspect Concert	4 September 2022	1 day	13:30 – 17:30	Set up and Strike on the same day	In celebration of HH #150 we are partnering with the Heath and Hampstead society to produce a music concert event on Parliament Hill Bandstand Estimated Participants (800 adults, 200 children)	Medium
The Hampstead Heath Film Festival	5 - 11 September	7 days	Various times from 10:00 – 21:30	4 days set up, starting 4 September	A film festival showing contemporary and Modern classics. Based by the Lido green opposite the Parliament Hill Athletics track.  The set up will include specialist catering outlets and Q&A session in partnership with the city  Estimated Participants 8,000 over 7 days	Major
The 24 <sup>TH</sup> Duathlon	4 September 2022	1 day	08.00 – 11.00	Set up and Strike on the same day Preregistration at the Information Centre on 3 September	The is a swim Run across all our swimming facilities and finishing at the Parliament Hill track's event is co-managed by the Hampstead Rugby Club and the Leisure and Events Manager  400 Participants over 16s only	Medium
THE 19 <sup>TH</sup> Conker Championships	9 October 2022	1 day	13:00 – 16:00	Set up and Strike on the same day	The conker Championships are a regular event which we co-host with Heath Hands. The event includes a band and a master of ceremonies the Conker Meister! Estimated Participants (200 Adults and 600 Children)	Medium

The London Youth Games and the greater London Cross Country Championships	20 November 2022	1 day	06:00 –16.30	3 days set up creating the course etc strike same day	<p>A London Competition With several age groups including young athletes.</p> <p>Infrastructure includes several Marquees and a VIP caravan serving food and hot drinks. Estimated numbers throughout the day over 2000</p>	Major
---	------------------	-------	--------------	---	---	-------

<b>Committee(s):</b> Open Spaces and City Gardens West Ham Park Education Board Epping Forest and Commons Hampstead Heath, Highgate Wood and Queens Park Queen's Park Consultative Group Highgate Wood Consultative Group Hampstead Heath Consultative Committee	<b>Dated:</b> 13 July 2021 13 July 2021 9 September 2021 13 September 2021 29 September 2021 6 October 2021 6 October 2021 1 November 2021
<b>Subject:</b> Two year review of the Open Spaces Department's learning programme 2019-21	Public
<b>Which outcomes in the City Corporation's Corporate Plan does this proposal aim to impact directly?</b>	1, 2, 3, 4, 8, 10
<b>Does this proposal require extra revenue and/or capital spending?</b>	N
<b>If so, how much?</b>	N/A
<b>What is the source of Funding?</b>	N/A
<b>Has this Funding Source been agreed with the Chamberlain's Department?</b>	N/A
<b>Report of:</b> Director, Open Spaces Department	<b>For Information</b>
<b>Report author:</b> Abigail Tinkler, Head of Learning	

## Summary

This report and appendices provide Members with an overview of the Open Spaces learning programme from 2019 to 2021. The programme has received core funding since April 2019 and delivers school, youth, play, community and volunteering opportunities to children and adults at Hampstead Heath, West Ham Park and Epping Forest. Key highlights include:

- The programme engaged over 44,000 participants in facilitated learning activities over the two years.
- The programme continued to reach audiences in need during the Covid pandemic, producing an innovative programme in line with each stage of restrictions.
- Programme evaluation showed a positive change across five impact areas: connection, understanding, wellbeing, confidence and involvement.

## Recommendation

Members are asked to: Note the report.

## Main Report

### Background

1. In 2016 the Open Spaces Department launched a new centrally co-ordinated learning programme. Following a successful three years, the Open Spaces Department's resource base was increased to provide core funding for the learning programme from April 2019.
2. The programme was developed in response to concern over health and wellbeing inequalities as people in deprived areas face barriers to accessing nature and

associated health and wellbeing benefits. The programme has the following aims and outputs:

- Engage urban and deprived communities close to three open spaces: Hampstead Heath, Epping Forest (including Wanstead Flats) and West Ham Park
- Deliver five learning impact areas: understanding, confidence, involvement, wellbeing, and connection
- Schools service operating out of Hampstead Heath, Epping Forest, West Ham Park
- Green Talent programme working with young people struggling in education and/or furthest from the job market
- Play activities at Hampstead Heath
- Volunteer development and community engagement.

### **Current Position**

3. This report provides, as Appendix 1, a detailed two year review of the Open Spaces learning programme from 2019 to 2021.
4. The review outlines the successful school, play, youth, community and volunteering programme delivered in 2019-20, including:
  - Schools service operating from Hampstead Heath, Epping Forest and West Ham Park, reaching students in London's most deprived boroughs including Tower Hamlets, Newham, Hackney, Islington, Haringey, Brent and Camden.
  - Green Talent programme working with young people struggling in education and/or furthest from the job market, including pupil referral units, young carers and young refugees.
  - Play activities at Hampstead Heath, reaching children and families from some of the most deprived wards to the south of the Heath, including Gospel Oak Ward where there is 39% child poverty.
  - Volunteer development and community outreach work, including a successful partnership with 'Ambition, Aspire, Achieve', an organisation that works and supports families from very deprived areas in Newham.
  - The 2019-20 programme reached over 40,000 participants and exceeded its participation target by 7%.
5. The review outlines the innovative approach taken in response to the Covid pandemic and associated restrictions, including:
  - A series of nature-focused activities which schools and families could do themselves – for example, showing children how to create eco art or make a bird feeder. Activities were designed to include children at home with only limited resources by using simple items such as old cereal packets and milk cartons. Printed activity sheets were shared via food banks, community centres and hostels, reaching families who may not have access to a computer.

- Reaching out to groups in need, including a hostel for homeless families, young people who had been suffering from anxiety and depression over lockdown, and unaccompanied refugee minors, offering bespoke programmes including a virtual tour of Epping Forest.
  - Responding to concerns over the impact of the pandemic on mental health with new sessions designed to improve wellbeing, including an in-school sessions for schools who were unable to visit our Open Spaces, and outdoor facilitated sessions for groups of five (plus one facilitator) to coincide with the 'rule of six' outdoors.
  - An adapted school programme to engage the vulnerable children, children with special educational needs and disabilities, and key worker children who were attending schools (which were otherwise closed) within walking distance of West Ham Park and Hampstead Heath.
  - Regular in-school nature sessions for autistic children, bringing nature learning to the school whilst they were unable to travel to West Ham Park due to staff shortages during lockdown.
6. The programme's innovative approach to engagement through the Covid pandemic was featured in the Evening Standard, City Matters, Ham and High, Pro Landscaper and Epping Forest Guardian.

### **Key Data**

7. The programme engaged 44,487 participants in facilitated learning activities over the two years. Of these, 40,369 participated in 2019 – 20, and 4,118 participated in 2020-21 when Covid restrictions limited face-to-face participation.
8. The school programme engaged schools in 15 London boroughs, including the seven London boroughs with the highest levels of poverty: Tower Hamlets, Newham, Hackney, Islington, Haringey, Brent and Camden.
9. The programme made a positive difference across the five learning impact areas, including:
- 107% increase in learning volunteers' feelings of confidence to explore our Open Spaces
  - 22% increase in family participants' sense of wellbeing
  - 15% increase in school programme participants' feelings of connection to our Open Spaces
  - 74% increase in Green Talent participants' feelings of involvement
  - 47% increase in Green Talent participant's understanding of the importance of green spaces.

(School and family programmes are one-off engagements, whereas Green Talent and volunteer engagement are longer term and have a greater impact. Evaluation toolkits developed by University College London and University of Derby.)

### **Corporate & Strategic Implications**

10. The OS learning programme contributes to the delivery of all three of the CoL Corporate Plan's overarching aims and seven of the twelve outcomes:

- **Contribute to a flourishing society:**  
People are safe and feel safe; People enjoy good health and wellbeing; People have equal opportunities to enrich their lives and reach their full potential; Communities are cohesive and have the facilities they need.
- **Support a thriving economy:**  
We have access to the skills and talent we need.
- **Shape outstanding environments:**  
We inspire enterprise, excellence, creativity and collaboration; Our spaces are secure, resilient and well-maintained.

11. The OS Learning Programme delivers aspects of the CoL Social Mobility Strategy, CoL Education Strategy, and OS Business Plan. See appendix two for details.

### Financial summary

Year	Actual Exp £	Actual Inc £	Actual Net Income/Expenditure £	Budgeted Net Income/Expenditure £
2019/20	357,655	39,654	318,000	395,000
2020/21	336,019	6,784	329,235	312,000

12. The 2019/20 budget was underspent due to vacant posts within the team. The 2020/21 budget was overspent due to reduced school income following school closures and restrictions (COVID-19).

### Conclusion

13. The Open Spaces Learning Programme was successful in engaging 44,487 participants in facilitated activities from 2019 to 2021. The programme adapted to the restrictions and impacts of the Covid pandemic and continued to reach Londoners living in areas of poverty and deprivation, young people struggling with mental health, children with special educational needs and disabilities, and vulnerable children. Evaluation also showed that the programme had a positive impact on participants' understanding, wellbeing, confidence, connection and involvement with nature.

### Appendices

- Appendix 1 Review of the Open Spaces Learning Programme 2019-21
- Appendix 2 Strategic Value
- Appendix 2 Learning Principles
- Appendix 3 Maps showing school programme reach and areas of deprivation

### Background Papers

Three year review of the Open Spaces Learning Places' programme 2016 – 19

**Abigail Tinkler**, Head of Learning, Open Spaces Department

T: 07740 537 582, E: [abigail.tinkler@cityoflondon.gov.uk](mailto:abigail.tinkler@cityoflondon.gov.uk)





Appendix One

# Open Spaces Learning Programme Review

## 2019 - 2021

Page 73

## Table of Contents

<b>Executive summary .....</b>	<b>3</b>
<b>Introduction</b>	
Background .....	5
Rationale .....	5
Strategic value.....	6
Impact areas.....	6
Learning principles .....	6
Evaluation toolkits .....	6
 <b>Programme review 2019 - 2020</b>	
School services.....	7
Green Talent .....	11
Play programmes .....	13
Community engagement and volunteering.....	15
Participation summary.....	16
Highlights summary .....	16
 <b>Programme review 2020 - 2021</b>	
March – July 2020 .....	17
August 2020 .....	17
September – December 2020 .....	20
January – February 2021.....	22
March 2021 .....	24
Participation summary.....	28
Highlights summary .....	28
 <b>Summary 2019 - 2021.....</b>	<b>29</b>
 <b>Appendix two – strategic value .....</b>	<b>30</b>
<b>Appendix three – learning principles .....</b>	<b>31</b>
<b>Appendix four – maps showing school reach and areas of deprivation .....</b>	<b>32</b>

## Executive Summary

The Open Spaces Department's innovative learning programme facilitates change across five impact areas: understanding, confidence, involvement, wellbeing, and nature connection.

The learning programme was developed in response to a growing consensus that spending time in nature is beneficial to health and wellbeing, and a concern over health and wellbeing inequalities as people in deprived areas of London face more barriers than most to accessing nature. The programme provides a key method for the City of London to contribute to the health and wellbeing of residents of some of London's most deprived communities through connecting them more powerfully to their local green spaces. Audiences include school children growing up in poverty, young people excluded from mainstream schooling, and local people from communities that are under-represented in our green spaces. Delivery is focused on spaces located near areas of high deprivation, with programmes operating from West Ham Park, Hampstead Heath and Epping Forest.

During the last two years the core programme was delivered and then adapted to continue to provide a service during the Covid-19 pandemic.

- In 2019 – 20 the learning team delivered a successful face-to-face activity programme for schools, play, youth, community groups and volunteers
- In 2020-21 the learning team delivered an innovative, adapted programme in order to reach audiences with limited access to resources and outdoor space during the Covid pandemic.
- The programme exceeded its 2019-20 participation targets; however, face-to-face engagement was restricted in 2020-21 due to the Covid pandemic.

As 2019-20 and 2020-21 were very different years, rather than directly comparing outputs this report describes the approaches and outputs for each phase of the programme.

### ***Key achievements***

- The programme engaged over 44,000 participants in facilitated learning activities 2019-21.
1. The school service reached students in London's most deprived boroughs including Tower Hamlets, Newham, Hackney, Islington, Haringey, Brent and Camden.
  2. The Green Talent programme worked with young people struggling in education and/or furthest from the job market, including pupil referral units, young carers and young refugees.
  3. Play activities at Hampstead Heath reached children and families from some of the most deprived wards to the south of the Heath, including Gospel Oak Ward where there is 39% child poverty.
  4. The programme adapted in 2020-21 with targeted initiatives in-line with each stage of the Covid restrictions, including printed activity sheets delivered via food banks, activity

videos for use in school playgrounds, in-school nature wellbeing workshops, outdoor wellbeing programme for groups of six, an adapted Covid-safe school programme and Covid-safe play programme.

5. The programme made a positive difference across the five learning impact areas:

**Connection:**

15% increase in participants' feelings of connection to the Open Spaces after taking part in the school programme 2019-21

**Confidence:**

107% increase in participants' feelings of confidence to explore Open Spaces after taking part in the learning volunteer programme 2019-20

**Wellbeing:**

29% increase in participants' feelings of wellbeing after taking part in the learning volunteer programme 2019-20

**Involvement:**

74% increase in participants' feelings of involvement after taking part in the Green Talent programme 2019-21

**Understanding:**

47% increase in participants' understanding of the importance of green spaces after taking part in the Green Talen programme 2019-21

- The programme's innovative approach to engagement through the Covid pandemic was featured in the Evening Standard, City Matters, Hampstead and Highgate Express, Pro Landscaper and Epping Forest Guardian.
- The programme has delivered vital aspects of the City of London Corporation's Corporate Plan, Social Mobility Strategy and Education Strategy.

## **Feedback**

*"It was fantastic to get outside, to a different – and very special space – and to do something real, hands on and outdoors... The learning ... was fantastic. No screens, no walls... Magic."* Headteacher, Eleanor Palmer Primary School, Camden (Hampstead Heath)

*"The session gave us a chance to see the children use collaboration skills, as well as concentration and resilience - all key values at Park Primary School. We would fully recommend this experience..."* Teacher, Park Primary School, Newham (West Ham Park)

*"Lockdown has been so tough on me and my son as he is only 13 months, so getting able to come here and see other children really makes me happy and seeing how happy he is in his face, thank you so much! We would be truly lost without this place."* Participant, One O'clock Club (Hampstead Heath)

*"As a busy family, it was fantastic to spend time outdoors together, work as a team and join in the fun and creative activities while learning new skills. The session was professionally organised, led by a very friendly and welcoming team member who put us at ease straight from the beginning."* Participant, family workshop (Epping Forest)

# Introduction

## ***Background***

The Open Spaces learning programme engages urban and deprived communities close to three open spaces: Hampstead Heath, Epping Forest (including Wanstead Flats) and West Ham Park.

The programme delivers five learning impact areas; understanding, confidence, involvement, wellbeing, and connection.

The programme consists of the following workstreams:

- a) Schools service operating out of Hampstead Heath, Epping Forest, West Ham Park
- b) Green Talent programme working with young people struggling in education and/or furthest from the job market
- c) Play activities at Hampstead Heath
- d) Volunteer development and community outreach work

The OS learning team brings together expertise in outdoor learning, schools, play, volunteering and youth work. Eight full time officers and one part time officer are located at the key delivery sites (Hampstead Heath, Epping Forest and West Ham Park), and an additional pool of casual educators and play workers support programme delivery.

## ***Rationale***

The learning programme was developed in response to:

- a growing consensus that spending time in nature is beneficial to health and wellbeing, whilst contact with nature is becoming more infrequent
- an understanding that access to green space is not equal, with people in deprived areas of London facing more barriers than most to accessing nature, which can impact on physical activity levels and mental health
- a concern that visitors to our Open Spaces are not always representative of the local communities, with Black, Asian and minority ethnic groups (BAME) and deprived communities under-represented
- a recognition that barriers to accessing green spaces exist for local communities, including fear of getting lost, a lack of confidence in the outdoors, a lack of understanding of the activities available, and a feeling that our spaces are 'not for them' (highlighted through consultation with communities adjacent to our Open Spaces)
- a concern about the attainment gap between disadvantaged school students and their peers
- a recognition of the value of play in young people's development, with natural play having a lasting impact on the development of children's connection, understanding and appreciation for the natural environment.



## ***Strategic value***

The programme contributes to the delivery of all three of the Corporate Plan's overarching aims and seven of the 12 outcomes. See appendix two for more information.

## ***Impact areas***

To tackle the challenge of a growing disconnect with nature and green spaces, the learning team design programmes to deliver change across five impact areas:

<b><i>Understanding</i></b>	<b><i>Confidence</i></b>	<b><i>Nature connection</i></b>	<b><i>Wellbeing</i></b>	<b><i>Involvement</i></b>
<b>People understand the value and importance of green space</b>	People are confident to use green spaces, as part of our activities or independently	People develop a sense of place with green spaces	People have restorative and meaningful experiences in green spaces	People take positive action for, and get involved with, green spaces

To maximise impact, the learning team target programmes to reach those who could benefit the most, including school children growing up in poverty, young people excluded from mainstream schooling, and local people from communities that were under-represented in our green spaces. A bespoke evaluation toolkit, developed in collaboration with academic partners at Derby University in 2018, has been used to measure impact across the five areas (information regarding this evaluation methodology is available on request), as well as a wellbeing evaluation toolkit developed by University College London.

## ***Learning principles***

A set of learning principles for schools and play inform programme development and delivery. The principles:

- map across the five impact areas
- bring together the expertise of the team and relevant research
- enable shared reflective practice and a shared vision for quality learning
- increase the level of active engagement of participants
- provide a tool for effective decision making and peer review

See appendix three for more information.

## ***Evaluation toolkits***

A bespoke evaluation toolkit developed by Derby University in 2018 was used to measure change across the five impact areas. An additional wellbeing evaluation toolkit from University College London was used to provide a more nuanced measure of psychological wellbeing. More details are available on request.

## Programme review 2019-20

The 2019-20 programme delivered:

- a) Schools service operating out of Hampstead Heath, Epping Forest, West Ham Park
- b) Green Talent programme working with young people struggling in education and/or furthest from the job market
- c) Play activities at Hampstead Heath
- d) Volunteer development and community outreach work

The 2019-20 programme reached over 40,000 participants and exceeded its participation targets by 7%.

### School services

#### Overview

High quality booked sessions were delivered to a wide range of schools at Epping Forest, Hampstead Heath and West Ham Park.

Sessions were delivered to support the National Curriculum and promote awe, wonder and inspiration as children learned through active engagement with the open spaces. Based on the unique features of the sites and the needs of schools, the programme provided rich opportunities to:

- Learn through first hand observation (e.g. exploring habitats, life cycles, seasons)
- Stimulate the imagination (e.g. creating stories inspired by nature, creating art work using natural materials)
- Give children an active role (e.g. pond dipping, orienteering, field work)
- Enable children to see the relevance and application of their knowledge and skills beyond the classroom (e.g. solving a real-life practical challenge such as assessing pond health or testing materials to build a dam)
- Uncover evidence of local history (e.g. finding bomb craters in the Epping Forest site)
- Develop team working skills (e.g. team den building).

The Epping Forest programme was based at The View visitor centre near Chingford, with sessions delivered in the adjacent forest and Tudor hunting lodge. The Hampstead Heath Programme operated from the Education Centre building in Parliament Hill Fields and the 'Glassroom Classroom' in Golders Hill Park, with sessions delivered in bespoke teaching gardens as well as the wider Heath. Both sites provided a variety of habitats for exploration. The Epping Forest and Hampstead Heath programmes have charges / income targets, and reach schools across multiple London boroughs, including Hackney, Waltham Forest, Harringay, Tower Hamlets, Islington and Camden. Programmes were offered from nursery to A level, with most visits coming from primary schools.

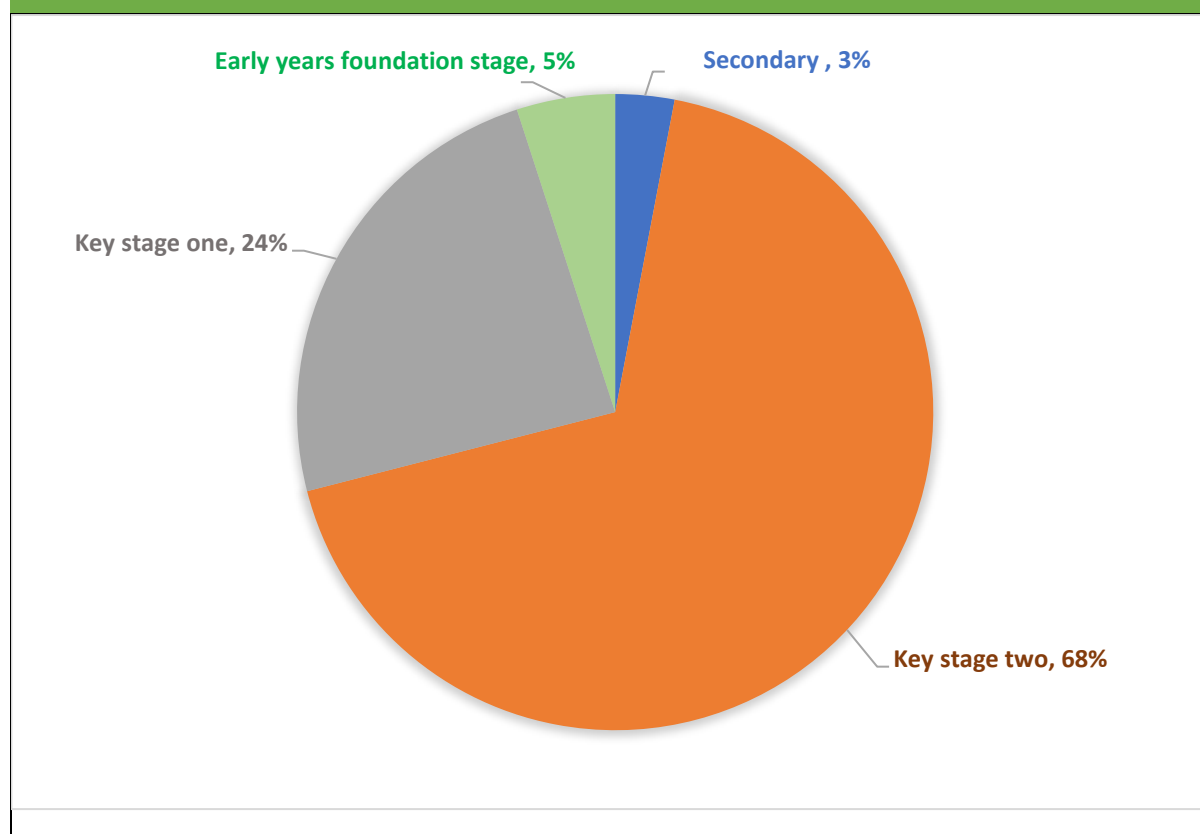
The programme at West Ham Park offers a free programme to primary schools in Newham, which is ranked in the worst four London boroughs for child poverty (Trust for London). The programme builds relationships with a small number of local schools, enabling repeat visits from multiple year groups, and works collaboratively with teachers to produce relevant outdoor learning sessions.

## Participation

School programmes	Target 2019-20	Actual 2019-20
Number of school participants at Epping Forest	2,640	2,589
Number of school participants at Hampstead Heath	8,360	8,554
Number of school participants at West Ham Park	3,200	5,033
<b>Total number of school participants</b>	<b>14,200</b>	<b>16,176</b>

The majority of participating students were primary school children from key stage two (7 to 11 year olds):

*Percentage of secondary, key stage two, key stage one and early years foundation stage students, 2019-20*

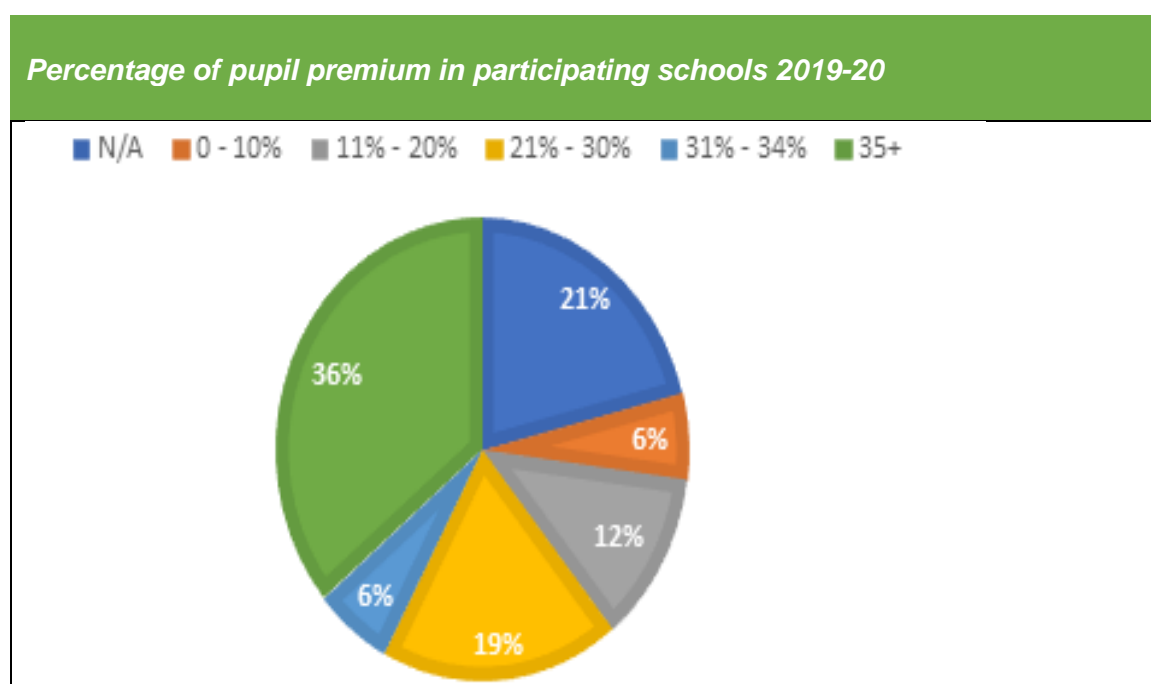




## ***Reaching disadvantaged school students***

There is a wide recognition and concern over the attainment gap between disadvantaged school students and their peers, and the OS learning programme has engaged schools in some of London's most deprived boroughs, including Tower Hamlets, Newman, Hackney, Islington and Haringey (see appendix 3 for maps illustrating the programme reach within areas of deprivation).

Pupil premium is an indicator of disadvantage as it is allocated to children who have been in receipt of free school meals, looked after or adopted from care. The average pupil premium level for primary schools in England is 21%, and 35% is high. Through monitoring school pupil premium as an indicator of disadvantage, we know that the school services have reached a significant number of these students; 36% of participating schools had a pupil premium level of 35% and above:



## ***Evaluation***

### **Connection:**

- 81% of participants felt connected or very connected to our Open Spaces after taking part in a school workshop.
- 19% increase in feelings of connection to Open Spaces, compared to a 5% increase in 2018-19.

### **Confidence:**

- 88% of participants felt confident or very confident to 'explore places like this' after taking part in a school workshop.
- 13% increase in feelings of confidence to explore Open Spaces, compared to an 8% increase in 2018-19.

## **Feedback**

*"Investigation with a practical application and context!"* Teacher, Kentish Town Primary School ('Soil Scientists' workshop, Hampstead Heath)

*"Children were able to experience aspects of Stone Age living as they were immersed into the forest environment. The session was great and nicely fitted into our work on the Stone Age to Iron Age. The objectives were met. Building the shelters was raw fun and the fire making was brilliant too."* Teacher, Mandeville Primary School, Hackney ('Stone Age Survival' workshop, Epping Forest).



*School students participating in an orienteering workshop on Hampstead Heath.*

## **School workshops**

All school workshops support the delivery of the National Curriculum. The school workshops offered at the different sites can be viewed on our website:

<https://www.cityoflondon.gov.uk/things-to-do/green-spaces/hampstead-heath/learning-at-hampstead-heath>

<https://www.cityoflondon.gov.uk/things-to-do/green-spaces/epping-forest/learning-in-epping-forest>

<https://www.cityoflondon.gov.uk/things-to-do/green-spaces/west-ham-park/learning-in-west-ham-park>

## **Increasing participation**

During 2019-20 the school team created plans to increase the number of school students engaged in 2020-21, with an emphasis on schools with high pupil premium. The plans included new models of staffing and delivery, marketing, and increased income targets. These plans were put on hold due to the pandemic and associated school closures.

## Green Talent

### Overview

Green Talent worked with young people struggling in education and/or furthest from the job market, providing opportunities to explore careers in the environmental and green spaces sector. Targeting 13 – 18 year olds, as well as 19 - 25 year olds with additional support needs, the programme provided facilitated opportunities for young people to recognise and develop their individual talents and skills. For example, completing outdoor conservation tasks boosted resilience, confidence and self-esteem through the achievement of purposeful goals, and activities such as sharing food around a fire helped to build peer relationships by opening dialogues around a shared new experience. Case studies are available on request. Outputs included:

- Scoping study for the Green Talent project moving forward, including identifying target boroughs and youth provisions in boroughs adjacent to our Open Spaces sites.
- Respite session for Brent Young Carers - fire lighting, hot chocolates, and team shelter building challenge. An opportunity to pause responsibilities and enjoy spending time in nature.
- Culture Mile Work Experience programme - practical conservation and learning activities on Hampstead Heath (as part of a wider work experience programme led by Culture Mile Learning)
- Team building sessions for Wormwood Scrubs summer youth programme
- 12-week programme of outdoor learning and skill building at Meadway Pavilion Pupil Referral Unit, Barnet
- Horticulture hands-on learning sessions for Meadway Pavilion Pupil Referral Unit horticulture students, Golders Hill Park
- 10-week practical conservation programme for young people at Hampstead Heath
- Practical outdoor skill-building session for unaccompanied young refugees with the Refugee Council at West Ham Park .

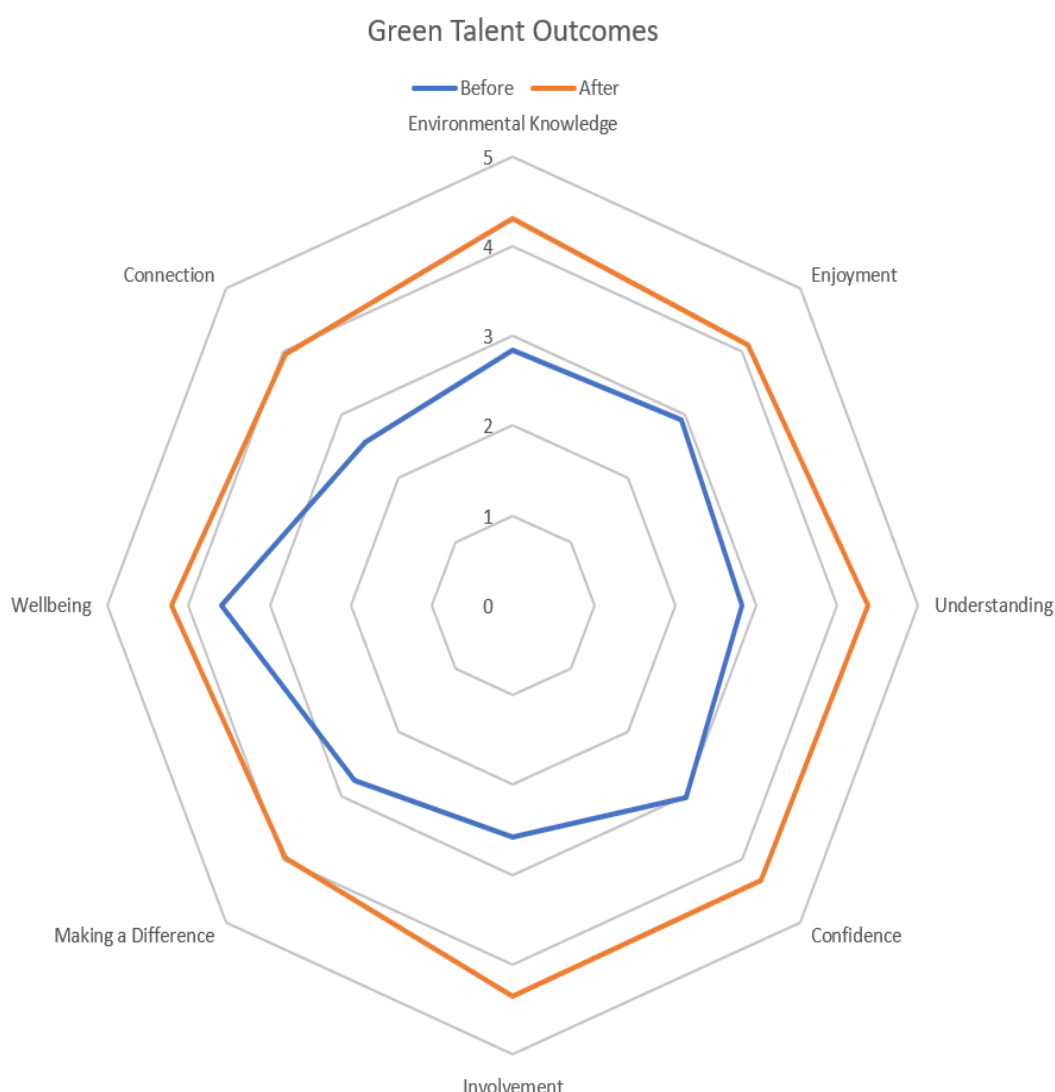
### Participation

Green Talent 2019-20	Target	Actual
Total number of young people participating in the programme	85	90

## Evaluation

Combining the evaluation toolkit developed in collaboration with Derby University together with some bespoke evaluation questions developed in collaboration with Green Talent Participants, the programme demonstrated a positive difference across the five learning impact areas as well as environmental knowledge, making a difference, and enjoyment.

The following 'outcomes star' shows participants' perceptions before and after taking part in Green Talent sessions.



## Feedback

*"It was great to see how the young people took to learning all the different skills you showed them... this was such a valuable experience for them all. From what the young people said afterwards they got a lot out of accomplishing the tasks and working together – making new friends, as some of them wrote on our feedback forms. You may also have heard them say that if they hadn't come they would just have been staying at home in their rooms, which is the worst thing for them in their situations."* London Manager and Senior Children's Psychotherapist, Refugee Council



*“I’ve really enjoyed being involved in this programme, it has given me the chance to take a much needed break from caring, meet other young carers and learn new skills. We’ve all really enjoyed this opportunity more than we thought we would. It has also been a great boost for our mental well-being”.* Participant, Brent Young Carers



Respite session for Brent Young Carers, Hampstead Heath

## **Play Programmes (Hampstead Heath):**

### **Overview**

Two play centres at Hampstead Heath provide both indoor and outdoor play facilities, with an Adventure Clubhouse providing play facilities for under-16s, and a One O'clock Club providing play facilities for under-fives and their parents/carers. The centres are located in the south of the Heath, adjacent to the borough of Camden, which is ranked in the worst four London boroughs for income inequality (Trust for London), and close to areas of deprivation such as Gospel Oak ward where there is 39% child poverty (Open Data, Camden Council).

The play centres bring individuals and communities together to share experiences and promote mutual respect and tolerance. Analysis of postcode data from participants shows that the centres are engaging people from wards where poverty is high, such as Gospel Oak and Haverstock, as well as wards in which most areas are affluent, such as Hampstead Town. The play facility provides an open, welcoming space in which communities can meet and engage in a shared interest regardless of background and circumstance, thus supporting community cohesion.

The play centres were staffed by playworkers who were able to support young people's play and learning. The Adventure Clubhouse was open from April to October, offering a school

holiday programme and after school provision. The One O'clock Club was open all year round, offering afternoon sessions every weekday.

Both provisions were free to access and provided a space where children could play and engage in activities that they had freely chosen, including both facilitated play and free play. Outdoor play included den building, sand, mud and water play, obstacle courses and circus skills. Indoor activities included mask making, leaf printing and badge making. At the Adventure Clubhouse, outdoor adventure play structures were also provided.

Children over the age of eight were able to visit without an accompanying adult, which enabled children whose parents/carers are not able to take them to activities outside school to participate.

## ***Participation***

The 2019-20 play programme exceeded its targets and exceeded 2018-19 participation:

<b>Play Programme 2019-20</b>	<b>Target 2019-20</b>	<b>Actual 2019-20</b>
<b>Number of young people attending the Clubhouse</b>	8,000	8,035
<b>Number of under-5s attending the One O'clock Club</b>	8,500	9,208
<b>Number of adults attending the One O'clock Club</b>	6,500	6,709
<b><i>Total number of participants</i></b>	<b>23,000</b>	<b>23,952</b>



Nature craft activity at the Adventure Clubhouse



Sensory activity at the One O'Clock Club

## Community engagement and volunteering

### Overview

The learning team inspire and enable under-represented local communities to access and enjoy our open spaces. The provide targeted programmes including family learning and play sessions and volunteering opportunities.

The team facilitate volunteering experiences which enhance well-being and build connection to the green spaces and provide training and development opportunities.

The team provide training and volunteer management resources for staff across the Open Spaces department.

### Outputs

- Partnership with 'Ambition, Aspire, Achieve', an organisation that works and supports families from very deprived areas in Newham, one of London's most deprived boroughs, supporting their audiences to engage with our learning programme and Open Spaces
- Social action project with a secondary school; the project developed activities and resources to engage residents in care homes in Waltham Forest, bringing aspects of Epping Forest to them (e.g. forest sounds, leaves, images, stories).
- Partnership with Newham Dementia group, looking at how a group of people with early dementia could access West Ham Park and what the Learning team could develop to engage with this group. Due to Covid restrictions this project was put on hold
- Development of new volunteer roles within the learning team – Epping Forest Schools Volunteer and Hampstead Heath Play Volunteer
- Partnership with UCL Art and Science faculty, supporting an undergraduate student to carry out a research project for our Learning Team. The project looked at how the Learning Team could make some activities more accessible to children with learning disabilities (case study available on request)
- Nature play programme on Hampstead Heath, designed to help families explore the natural world, understand the risks and benefits of natural play, and increase their confidence to play in natural settings. (Working in partnership with a range of local nurseries, play groups and family centres in Camden.).

### Participation

Programme strands	Target 2019-20	Actual 2019-20
Number of learning volunteers engaged with the programme	20	16
Number of community engagement participants	500	572

### Evaluation

Confidence: 107% increase in confidence to explore our Open Spaces after taking part in the 2019-20 learning volunteer programme.

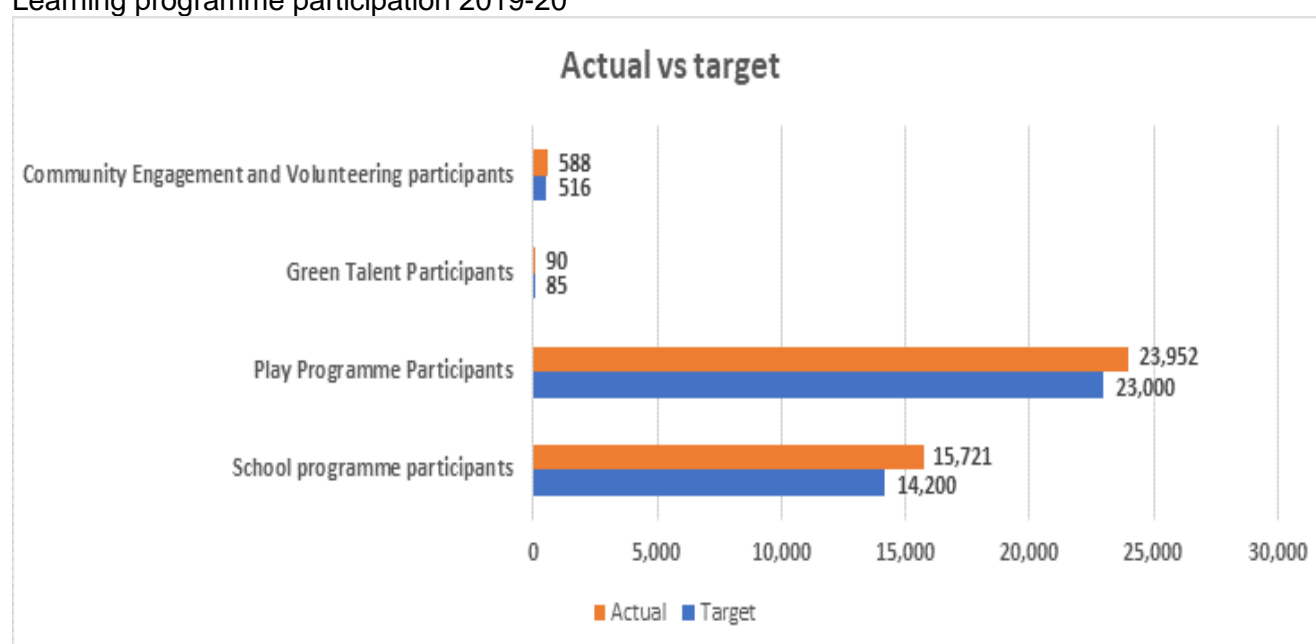
Wellbeing: 29% increase in feelings of wellbeing after taking part in the 2019-20 learning volunteer programme.

## 2019-20 Participation summary

The learning programme engaged 40,351 participants in 2019-20

Participants	Target	Actual
School programme participants	14,200	15,721
Play programme participants	23,000	23,952
Green Talent participants	85	90
Community engagement and volunteering participants	516	588
<b>Total</b>	<b>37,801</b>	<b>40,351</b>

Learning programme participation 2019-20



## 2019 – 20 Highlights summary

- Over 40,000 participants engaged in school, play, youth, volunteer and community engagement programmes.
- Programme evaluation demonstrated a positive change across the five learning impact areas.
- Schools in London's most deprived boroughs, including Tower Hamlets, Newham and Hackney, participated in the programme.
- Partnership with 'Ambition, Aspire, Achieve' facilitated programme participation for families from very deprived areas in Newham.
- Social action project for young volunteers helped to bring memories of Epping Forest to Waltham Forest care home residents.
- Bespoke respite session provided for young carers.
- Long term programmes for pupil referral units enabled young people to build confidence and skills.



## Programme Review 2020-21

The learning team had prepared for 2020 – 21 with plans and resources in place to increase school engagement and associated income targets at Hampstead Heath and Epping Forest, deliver a targeted programmes for youth, community and volunteer engagement and continue the successful play programmes. However, the restrictions imposed by the Covid pandemic posed challenges, including school closures. Whilst this impacted on the number of people the learning team could engage face-to-face, the team continued their focus on reaching people living in deprived areas of London, and developed programmes to support children, families and communities living with limited access to outdoor space and resources.

Rather than working within distinct project areas, the learning staff worked flexibly as a team to produce resources and activities. Staff adapted to new ways of working, moving from face-to-face engagement with people and the outdoors to home-based desk working, and learning new skills such as film editing and digital design. The team innovated and adapted the learning programme to accommodate each phase of the pandemic.

### March – July 2020

*Key restrictions introduced: UK in lockdown and schools closed (although vulnerable and key worker children could attend).*

During the first lockdown, the team created a brand-new series of nature-focused learning resources. Whilst there were already online resources available (e.g. National Trust and RSPB websites), the team sought to reach families who may have limited IT access, little/no outdoor space, and limited resources (e.g. crafting materials, science equipment). Activities were designed to use simple resources, such as old cereal packets and milk cartons. See [www.cityoflondon.gov.uk/learningprogrammeresources](http://www.cityoflondon.gov.uk/learningprogrammeresources)

The team's nature-focused activities included both activity sheets and videos which schools and families could then do themselves, e.g. videos teaching children how to do a bug hunt and create eco art, and worksheets demonstrating how to make a bird feeder or sun catcher. The learning materials were sent to over 800 London schools, with teachers sharing the activities with the children at school and those at home, and printed activity sheets were shared via food banks, community centres and hostels, reaching families who may not have access to a computer or printer. The resources were also shared via local authority newsletters and websites (City of London, Camden, Islington, Newham, Brent, Tower Hamlets, Waltham Forest), and activity sheets were included in packs curated by Culture Mile Learning and A New Direction, reaching families in need across London.

The team also produced a learning pack of narrative based activities inspired by Epping Forest, history and time travel. A time travelling character, letters and clues engaged children in solving a mystery whilst exploring the history and heritage of Epping Forest from the home or classroom.

The team also developed guidance for managing volunteers during the pandemic for the Open Spaces Department. The guidance was regularly updated in accordance to changes within the Governmental guidance.

## **Outputs**

- 1 heritage learning pack
- 30 activity sheets
- 7 activity videos
- Vounteering guidance for the Open Spaces Department

(See [www.cityoflondon.gov.uk/learningprogrammeresources](http://www.cityoflondon.gov.uk/learningprogrammeresources))

## **Reach**

- 800 schools via OS Learning newsletters
- 74 community groups across Camden, Waltham Forest, Newham and Hackney
- 7 local authority newsletters/websites: City of London, Camden, Islington, Newham, Brent, Tower Hamlets, Waltham Forest
- 300 families via food bank deliveries from Aishah Help (Newham, Hackney and Tower Hamlets)
- 150 families via 'Food for London Project' (Waltham Forest)
- 13,500 families via Culture Mile Learning Play Packs
- 6,800 London families via A New Direction 'Let's Create Packs'
- A new webpage was created to host the activities, and links were regularly shared via Open Spaces divisional facebook/twitter, City Corporation social media feed, the Lord Mayor's feed and the Policy Chair's feed.

## **Evaluation**

Evaluating the impact of the activity sheets and videos produced in the first few months of the pandemic was challenging. Initially the team focused on producing the resources and reaching children and families in need as a priority and did not develop an evaluation methodology prior to sharing these resources. Later in the year, they worked in partnership with UCL, supporting an undergraduate student to carry out a research study on the impact of these resources. Unfortunately, the data gathering phase of this project coincided with lockdown three where many staff in the community groups and charities (where the resources had been shared) were on furlough, making it very difficult to gather feedback. However, the surveys produced can be used again.

## **Feedback**

*"Thank you very much for the ideas during lockdown. I will be setting these as tasks for pupils via google classroom."* Teacher, Curwen Primary School, Newham

*"The learning resources and activity sheets provided by the City of London Open Spaces Team have been greatly appreciated by the families, children and young people we have been supporting during these challenging and unprecedented times. We have shared them as part of the weekly food and activity packs we have been delivering to the doorsteps of some of our most vulnerable children and young people during lockdown. Many of those we support do not have a garden or easy access to green spaces and have really been struggling during this period. The nature themed activity sheets and resources have been a really great way to promote positive activities and a great addition to the packs we've been delivering."* CEO, Ambition, Aspire, Achieve (Newham)



*Printed activity sheets delivered to England's Lane Hostel for homeless families in Camden, where families are living with limited space and resources.*



*Shelter created by Capel Manor Primary in Enfield, using one of our activity videos to engage the vulnerable and key worker children who were in school during lockdown one.*



*OS Learning resources included in Culture Mile Play Packs*

## August 2020

*Key restriction eased: Groups of six allowed to meet outdoors*

The team were able to work face-to-face with groups of up to five participants outdoors, and facilitated sessions at Epping Forest, Hampstead Heath and West Ham Park. In response to concerns over the impact of the pandemic on mental health, the sessions were designed to promote wellbeing by spending time in nature, learning new skills, discovering something new, being creative, and working together as a group. An evaluation toolkit developed by UCL was used to measure wellbeing before and after the sessions and results show that participants' wellbeing increased by an average of 22% after taking part in the session.

Activities included eco art, pond dipping, shelter building and nature crafts, and included both family learning sessions for all ages and nature-play sessions for children under 5 and their parents/carers.

The sessions were designed to keep people safe during the Covid-19 pandemic – the max group size was 6 (including the facilitator), and they took place exclusively outside with social distancing, hand washing stations or hand sanitizer are available, and all equipment cleaned before use.

The summer programme prioritized sessions for groups who may have struggled during lockdown, working with 'Ambition, Aspire, Achieve' in Newham to run a series of sessions for young people who have been struggling with anxiety and depression over lockdown, as well as other children and families local to its green spaces. The programme delivered a range of outdoor activities such as clearing leaves and watering plants, which boosted self-esteem and confidence.

### **Outputs**

- 56 Family Nature Wellbeing sessions at Hampstead Heath, Epping Forest and West Ham Park
- 35 Nature Play sessions for under-5s and parents/carers at Hampstead Heath
- 6 Nature Wellbeing sessions for young people suffering from anxiety and depression at West Ham Park

### **Reach**

- 232 family learning participants
- 144 nature play participants
- 33 young participants suffering from anxiety and depression

Sessions were fully booked at Epping Forest, West Ham Park and Hampstead Heath, although there were some cancellations due to bad weather.

### **Evaluation**

- 22% increase participants' sense of wellbeing after taking part in a family Nature Wellbeing Workshop.

### **Feedback**

*"We had a brilliant outdoor session in Epping Forest... Our 9 year old daughter had so much fun building a shelter in the forest and engaging in eco art activities such as leaf bashing and stick spider webs. As a busy family, it was fantastic to spend time outdoors together, work as a team and join in the fun and creative activities while learning new skills. The session was professionally organised, led by a very friendly and welcoming team member who put us at ease straight from the beginning."* Participants, Family Nature Wellbeing workshop, Epping Forest.





*Children from the 'Ambition, Aspire, Achieve' project helping to clear leaves and water plants in West Ham Park, boosting confidence and self-esteem.*



*Mini clay models created at a Hampstead Heath Nature Play session*

## September – December 2020

*Key restriction eased: Schools and indoor play provision reopen.*

The learning team launched a Covid-safe programme for schools and play, reorganising the school programme to take place entirely outdoors, and opening the two play centres with new safety measures in place. Covid-safe changes included school groups working in their bubbles, OS Learning staff maintaining social distancing, enhanced cleaning, advanced booking for play programmes, and limits on the number of participants.

The team developed two new programmes for delivery in schools – a ‘Nature and Wellbeing’ workshop designed in response to concerns over the impact of Covid on mental health, and a ‘Habitats and Minibeasts’ session designed to help students to discover more within the school grounds. These programmes aimed to accommodate schools who were unable to travel due to the pandemic.

The team provided a weekly ‘Nature School’ at an inner-city school in Newham for a group of children with autism. The school were unable to visit our sites due to Covid restrictions. The team worked with the school to enrich their outside space with logs and natural materials, and delivered a variety of activities to encourage social interaction, hands-on exploration and connection with nature, such as making pine cone bird feeders and observing bird life together. The school were so delighted with the positive impact the sessions are having on the children that they created a ‘nature school hub’ within their school so that all classes can benefit, and plan to visit West Ham Park as soon as it is safe for them to do so.

The team ran regular weekly sessions for students from White Trees School – a specialist school for looked-after young people who experience behavioural, emotional and social difficulties. The young people benefitted from a varied programme designed to build confidence and connection with nature. The group spent time in Epping Forest, learnt new skills such as orienteering and wood carving, and contributed through activities such as litter picking.

The team ran Family Nature Wellbeing sessions at Epping Forest and Hampstead Heath over the autumn half term holiday.

The team continued to share activity sheets and videos, working with CoL’s ‘Our City Together’ team to include content within their newsletter and website.

### **Outputs**

- 2 new ‘in-school’ sessions developed
- 1 new ‘in-school’ weekly programme for children with autism
- New Covid-safe play programme and working practices for 2 play centres (Hampstead Heath)
- New Covid-safe school programme and working practices (Hampstead Heath, Epping Forest, West Ham Park)
- New weekly programme for looked-after young people with behavioural, emotional and social difficulties (Epping Forest)
- 24 Family Nature Wellbeing sessions at Hampstead Heath and Epping Forest
- 2 facilitated sessions for young people suffering from anxiety and depression (West Ham Park, partnership with ‘Ambition, Aspire, Achieve, Newham’)

### **Reach**

- 1,192 on-site school participants (Hampstead Heath, Epping Forest, West Ham Park, 42 sessions)

- 102 in-school workshop participants (2 sessions)
- 36 in-school autism programme participants (5 weekly sessions)
- 447 participants at the One O’Clock Club
- 100 participants at the Adventure Clubhouse
- 116 family learning participants
- 13 young people suffering from anxiety and depression (partnership with ‘Ambition, Aspire, Achieve, Newham)

### **Evaluation**

Participants in bespoke sessions for young people suffering from anxiety and depression reported improvement across all five impact areas: connection, involvement, confidence, understanding and wellbeing.

### **Feedback**

*“In these challenging times, the staff at Hampstead Heath made our first school trip since March one to remember. With clear risk assessments, excellent pre and post visit communication and an amazing days worth of survival activities, it was a joy to see another side of our students beyond the gates of the school.”* Teacher, Carlton Primary School, Camden

*“The One o’clock club is a great place for young children, the two staff are wonderful and make us feel comfortable and make the children so happy, they always have time to talk and always there to help! Activities are fantastic and the resources are always so clean and tidy all the time. So happy when we come here!!”* Participant, One O’Clock Club



Primary school programme at West Ham Park – the students enjoyed festive wreath making.

## **January – February 2021:**

*Key restrictions introduced: UK in lockdown and schools closed (although vulnerable and key worker children could attend).*

Some learning team members were furloughed part time during the winter 2021 lockdown; however, when working, they continued to engage learners, and developed a flexible learning programme of activities for the key worker, SEND and vulnerable children who were attending school, which was offered to schools within walking distance of West Ham Park, Hampstead Heath and Epping Forest. For many schools it was challenging to come out on a trip at this time (reduced staffing due to illness or staff self-isolating and additional workload for teachers as they adapt to changes) however, a small number of local schools close to Hampstead Heath and West Ham Park were able to visit, often for regular weekly sessions. The outdoor learning sessions provided a great opportunity for the children in school to work together as a team, build wellbeing, and apply their classroom learning in a new context.

The team continued to run weekly in-school sessions for children with autism and worked with an evaluator to better understand the impact of the programme and the aspects of the development and delivery that enabled these outcomes.

The team continued to share nature-focused activity sheets and videos. The resources were shared with teachers across the UK via the Learning Outside the Classroom website and the UK School Trips newsletter, which has a search reach of over 400,000 educators, and via 'Find Fusion' - the CoL Education Strategy Unit's new digital platform for learning.

The team collaborated with the Refugee Council to provide a virtual exploration of Epping Forest for young unaccompanied refugee minors. The group of young people had experienced serious and often multi-layered trauma and took part in the session as part of a wider programme to help improve their wellbeing. Participants were shown an aerial video of drone footage over the Epping Forest area to give them a sense of the scale of the area, as well as being shown different areas in the forest by a learning officer using a live video link. The focus of the session was looking at the birds of Epping Forest, and the birds that the participants would be able to see in their local area.

Whilst the team was unable to work face-to-face with pupil referral units and looked-after children over January and February, they delivered a series of virtual sessions to New Rivers College (a pupil referral unit in Islington) based around skills and careers in the outdoors.

### **Outputs**

- 29 school sessions for vulnerable and key worker school children at Hampstead Heath and West Ham Park
- 2 virtual careers sessions for PRU participants
- 1 virtual tour of Epping Forest for young refugees
- 1 new play programme for Camden families developed
- 5 sessions 'in-school' weekly programme for children with autism

### **Reach**

- 350 on-site school participants (Hampstead Heath and West Ham Park)
- 36 in-school autism programme participants
- 9 young unaccompanied refugee participants (virtual session)
- 8 participants from Pupil Referral Units (virtual sessions)
- 1 evaluation report for in-school nature programme for children with autism produced by professional researcher



## **Evaluation**

An evaluation report on the in-school nature learning programme for autistic children is available on request. The report highlights key strengths of the programme, including a child-centred teaching approach, time to explore, within a natural environment, creative, playful and purposeful activities, and providing supported risks and appropriate challenges. The report findings will be used to inform future practice and will be shared with the environmental education community.

## **Feedback**

*"The children in my group are all from the local area and yet they were talking about how the activity helped them see the park in a whole different way. After several lockdowns, it was lovely to see the children enjoying themselves in their local green spaces while learning key skills and working together as a team."* Teacher, Park Primary School, Newham.

*"It was such a special session, many of the children got to try fire lighting for the first time in their lives. In addition, many had been stuck indoors for longer than anyone would want because of lockdown! I really liked how you gave them just the right amount of guidance but then let them experiment in a safe way. Flint striking was a real lesson in perseverance. The children all asked when we could return and I promptly booked the Soil Science session."* Teacher, Eleanor Palmer Primary School, Camden



School children taking part in a survival skills and team building workshop on Hampstead Heath

## **March 2021**

*Key restriction eased: Schools reopen March 8th; 6 people allowed to meet outdoors from March 29<sup>th</sup>.*

Having worked with a small number of schools within walking distance of the Heath and West Ham Park (supporting key worker and vulnerable children), many of the teachers involved were keen to bring those who missed out whilst home-schooling. The team were ready to welcome schools back to our sites with a Covid-safe outdoor programme.

The team continued to collaborate with Camden Council to identify families who had struggled during lockdown, and began working with Chance UK, a charity that supports children with behavioral and emotional difficulties through a mentorship scheme. Targeted marketing and a priority booking system for a series of Nature Wellbeing sessions was created in advance of a series of sessions running over April. This was successful in engaging a total of 111 participants from these target groups (72% of all participants).

The team developed an outdoor nature-play programme aimed at children and parents/carers who would normally visit the One O'clock Club on Hampstead Heath and developed marketing materials and Covid-safe play activities for the reopening of the One O'clock Club in mid-April.

The team supported a school in Newham to develop their school grounds into a sensory garden and relaxation zone for children with special educational needs and children who need some space away from a traditional classroom environment. The team were able to give advice on planting and will follow this up with a facilitated session for students to prepare and plant the area in May.

The team worked with five CoL employee volunteers, who supported learning officers in delivering outdoor learning sessions for schools.

The team collaborated with the CoL Learning and Development team to design and deliver volunteer management training for staff across CoL.

### **Outputs**

- 37 school sessions at Hampstead Heath, Epping Forest and West Ham Park
- 1 new play programme for Camden families developed
- 4 'in-school' sessions for children with autism
- 1 bespoke plan for an in-school sensory garden
- New training programme in volunteer management developed

### **Reach**

- 945 on-site school participants
- 51 in-school autism programme participants
- 45 Nature Play participants

### **Evaluation**

- 84% of participants felt connected or very connected to our Open Spaces after taking part in a school workshop.
- 84% of participants felt a strong sense of wellbeing in nature after taking part in a school workshop.

### **Feedback**

*"Year 6s really enjoyed the WW2 session at the park. As well as consolidating their knowledge of the topic, they were really stuck by how the park they know so well was impacted by the war - particularly seeing the bomb crater and allotment images and plot. The activities were all very hands on and having artifacts (and replicas) to physically interact with supported their engagement and understanding. All the sessions were carried out in a very safe way. We will definitely book this activity again next year."* Teacher, Park Primary, Newham

*"It's really nice to see them happy. They have smiles on their faces when they go there [to Nature School]. They really enjoy it. It makes me happy."* (Teaching Assistant, Nature School for children with autism, Newham).



Nature learning resources developed for the 'in-school' nature programme for children with autism

## 2020-21 Participation summary

The 2020-21 learning programme engaged 4,017 participants in learning activities facilitated by a learning officer. These numbers are significantly lower than the target due to the restrictions of the Covid pandemic, which limited both opportunities to safely engage with audiences and the numbers that could be safely accommodated.

The figures below do not include self-led learning, e.g. using activity sheets and videos created by the learning team.

Participants	Target	Actual
School programme participants	18,350	2,722
Play programme participants	23,000	736
Green Talent participants	150	85
Community, family and volunteering participants	600	474
<b>Total</b>	<b>42,100</b>	<b>4,017</b>

## 2020-21 Highlights summary

- Activity sheets designed for families with limited resources or access to outside space shared with over 20,000 London families during the Covid pandemic.
- Bespoke school programme for vulnerable children, children with special educational needs and disabilities, and key worker children, engaging 1,257 participants during Covid lockdown 3.
- Two new 'nature wellbeing' workshops developed in response to the impact of the Covid pandemic on mental health, engaging 400 participants.
- Bespoke activities and virtual tour of Epping Forest delivered for unaccompanied refugee minors.
- Bespoke outdoor sessions for young people in Newham suffering from anxiety and depression.
- New 'in-school' nature programme for school children with autism, delivering 14 weekly sessions.
- New covid-safe play programme engaging 736 participants, engaging children and families with limited play space at home.

## Summary 2019 - 21

- The Open Spaces Learning Programme delivered a successful two years, engaging 44,487 participants.
- Evaluation showed that the programme had a positive impact on participants' understanding, wellbeing, confidence, connection and involvement with nature.

Due to the Covid pandemic, the two years were very different:

- In 2019-20 the programme delivered a 'business as usual' programme of school, play, youth, community and volunteer engagement.
- In 2020-21 the learning team delivered an innovative, adapted programme in order to reach audiences with limited access to resources and outdoor space during the Covid pandemic and associated restrictions.

## Appendix two

### Strategic Value

#### Corporate Plan

The Learning programme contributes to the delivery of all three of the 2018 – 2023 Corporate Plan's overarching aims and seven of the 12 outcomes:

- ***Contribute to a flourishing society:***
  - 1. People are safe and feel safe.
  - 2. People enjoy good health and wellbeing.
  - 3. People have equal opportunities to enrich their lives and reach their full potential.
  - 4. Communities are cohesive and have the facilities they need.
- ***Support a thriving economy:***
  - 8. We have access to the skills and talent we need.
- ***Shape outstanding environments:***
  - 10. We inspire enterprise, excellence, creativity and collaboration.
  - 12. Our spaces are secure, resilient and well-maintained.

The learning programme also supports delivery of the following corporate strategies:

#### **Social Mobility Strategy: Potential today, success tomorrow:**

- Everyone can develop the skills and talent they need to thrive
- Opportunity is accessed more evenly and equally across society

#### **Education Strategy:**

- Provide an educational experience that enriches and inspires through access to the learning opportunities that the City's cultural, heritage and environmental assets offer, combining creativity, innovation and enterprise alongside tradition and continuity
- Provide high quality exposure to the world of work at all stages of education to enable pupils to make informed career choices

#### **Open Spaces Department Business Plan:**

- People enjoy good health and wellbeing
- Nature, heritage and place are valued and understood
- People feel welcome and included
- People discover, learn and develop

## Appendix three

### Learning principles

A set of learning principles for schools and play inform programme development and delivery. The development of the principles involved combining relevant research with the professional expertise of learning team members to create a shared approach to learning programme development and delivery.

Team members' professional expertise (accumulated over time through reflection on experience of learning programme development, delivery and evaluation) was valued from the start and cross-referenced with academic research.

Recognising the importance of children having time to explore green spaces to build connection and confidence, and emphasising doing and discovering to support participants as active learners, are just some highlights from these principles.

The principles:

- map across the five impact areas
- bring together the expertise of the team and relevant research
- enable shared reflective practice and a shared vision for quality learning
- increase the level of active engagement of participants
- provide a tool for effective decision making and peer review

The learning principles are available on request.



# Appendix four

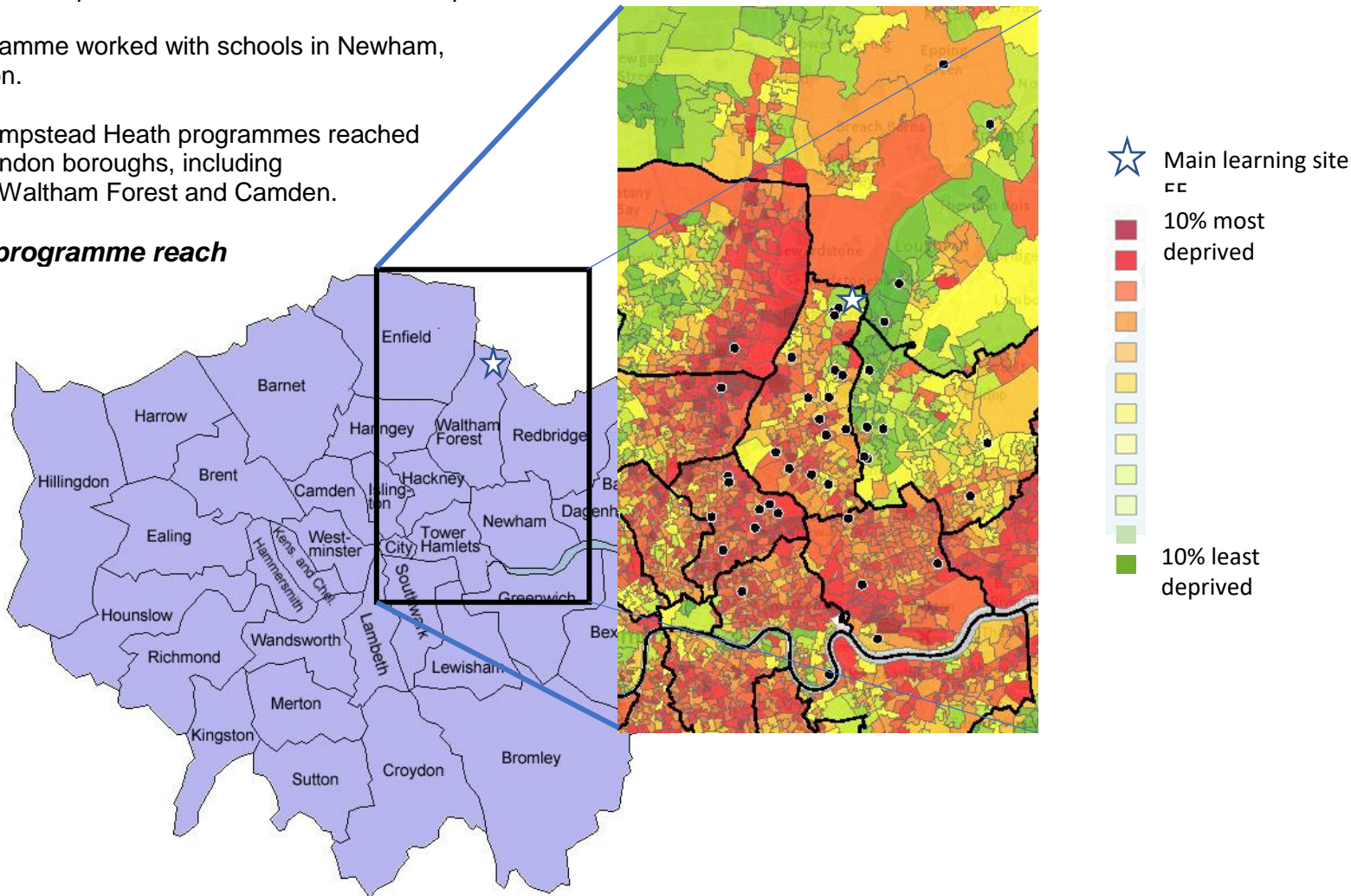
## Maps showing school programme reach and areas of deprivation in London

Data from the Government Index of Multiple Deprivation for England is shown on the maps using a coloured scale. Schools participating in the Open Spaces Learning Programme (2019 – 2021) have been overlaid on the map, showing programme reach. The Index of Multiple Deprivation was created using indicators across seven domains: income, employment, education, health, crime, barriers to housing and services, living environment, and provides a measure of relative deprivation.

The West Ham Park Programme worked with schools in Newham, and area of high deprivation.

The Epping Forest and Hampstead Heath programmes reached schools across multiple London boroughs, including Tower Hamlets, Hackney, Waltham Forest and Camden.

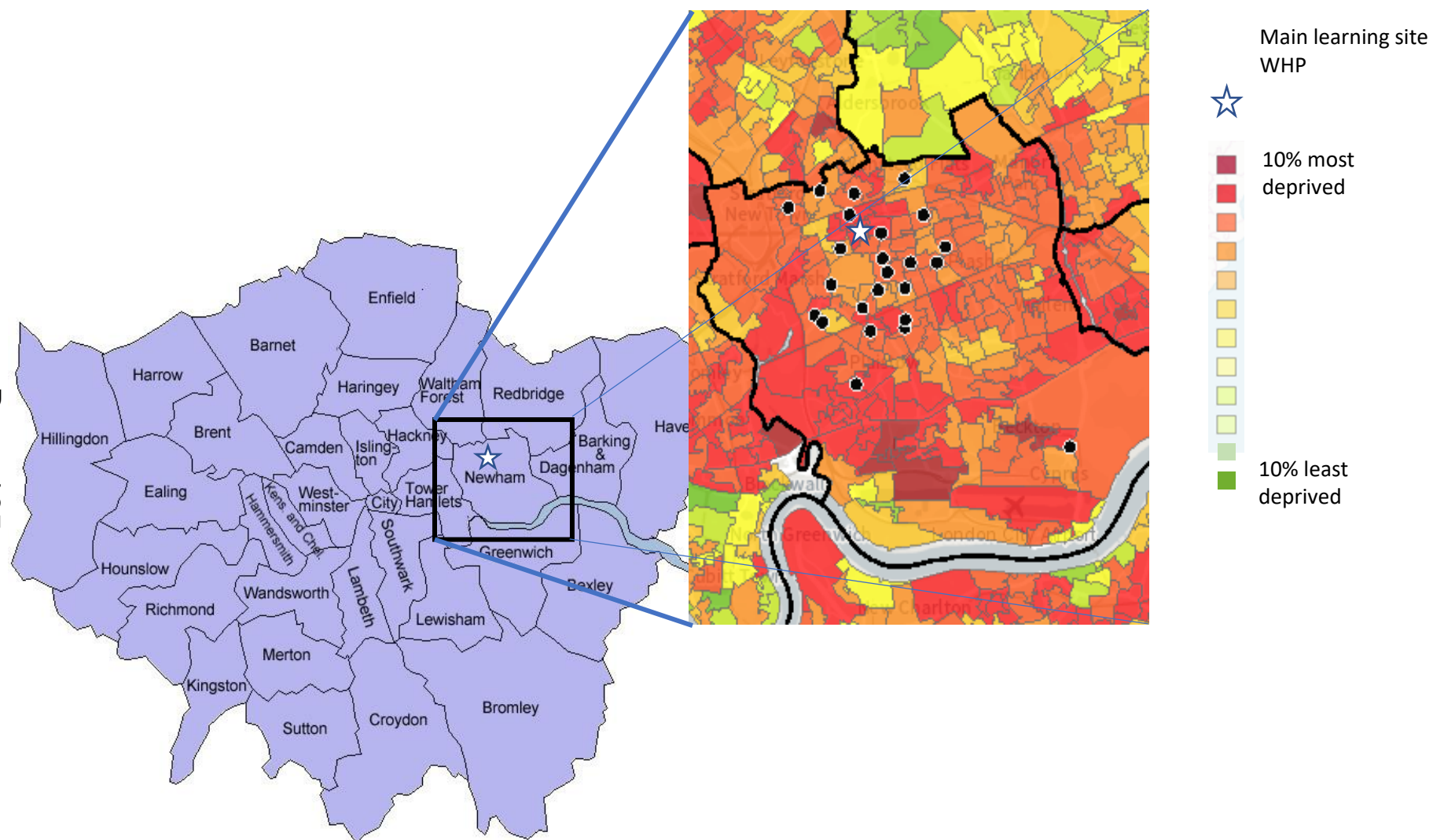
### Epping Forest school programme reach



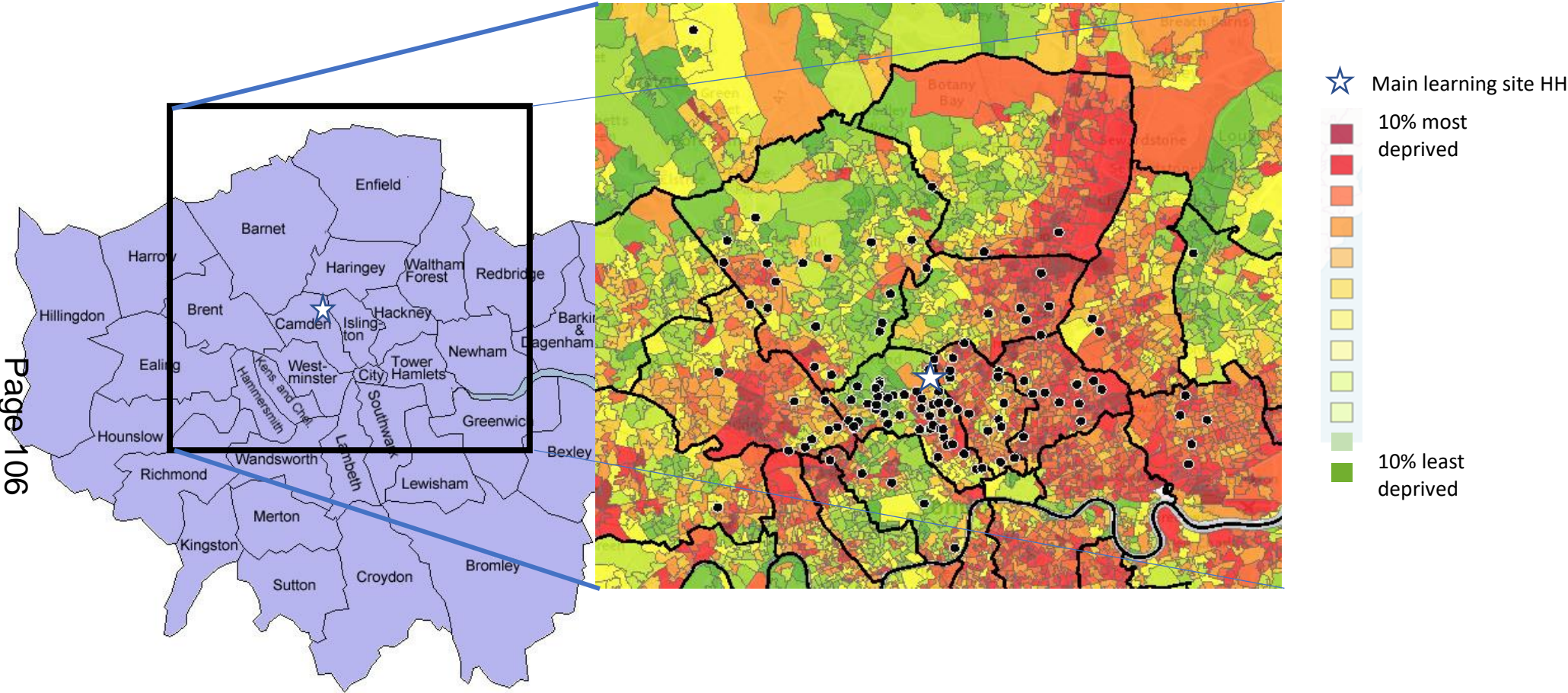


## West Ham Park school programme reach

Page 105



*Hampstead Heath school programme reach*





## Volunteering Update – October 2021

-main **conservation and maintenance** programmes resumed on Hampstead Heath, Highgate Wood, Hill Garden, Heath Extension, Golders Hill Park, Keats House and Kenwood Estate.

-phased recruitment of new volunteers has begun

-Autumn focus on general maintenance, scrub and woodland management, supporting Ranger Teams

-**wildlife monitoring** wrapping up in October - results then analysed with the Heath's Ecologist

-over 155 **youth** volunteers involved to date on after school and weekend sessions

-**Heath Friendly Schools:** ten local schools now involved in volunteering and nature activities

-**corporate volunteering:** nineteen companies have volunteered so far this year, with more scheduled in November and December

-**wildlife interpretation** sessions remain will relaunch in January to coincide with major citizen Big Garden Birdwatch

-**community** activities and health connections (selected): activities with Mind in Camden, Holborn Community Association, Queens Crescent Community Association (QCCA), African Health Forum, King's Cross Brunswick Community Association Somali families, North London Cares and Unity Works.

## Selected Highlights

What's on: autumn **walks and talks** organised: fungi identification, Fleet River, spider identification, the Heath in Autumn, forest bathing and exploring Highgate Wood

**Festive** wreath making for public, volunteers, Friends, schools and community groups will be advertised throughout December

Final **work experience** trainee staying in post until mid-December

New **Project Activity Leader** staff member appointed in September

**Savernake Road bridge:** further landscaping improvements and scheduled through Autumn – including a community volunteer day on 29<sup>th</sup> October

This page is intentionally left blank